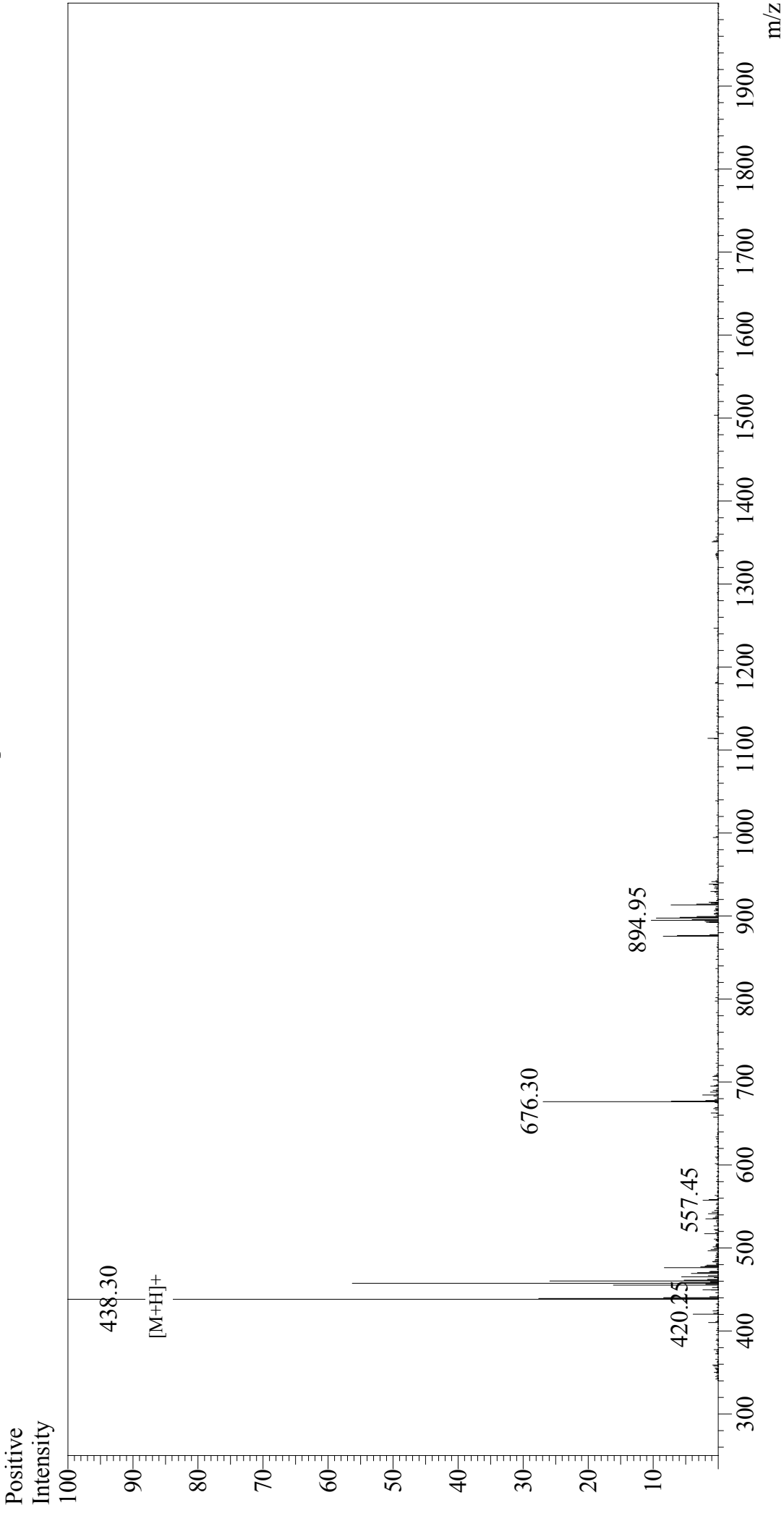


Mass Spectrum



Sample Information

Acquired by : Gary
Month-Day Processed : 04/06/18
Time Processed : 9:27:07
Injection Volume : 0.2
Sample Name : N-Formyl-Met-Leu-Phe
Cat. No. : RPI2956
Lot. No. : PE9901803
Theoretical MW : 437.56
Observed MW : 437.30

Interface : ESI
Nebulizing Gas Flow : 1.5L/min
CDL Temp : 250°C
Block Temp : 200°C

Interface Bias
Drying Gas Flow
T.Flow
B.conc

: +4.5 kV
: 5 L/min
: 0.2 ml/min
: 50% H₂O/50% MeOH