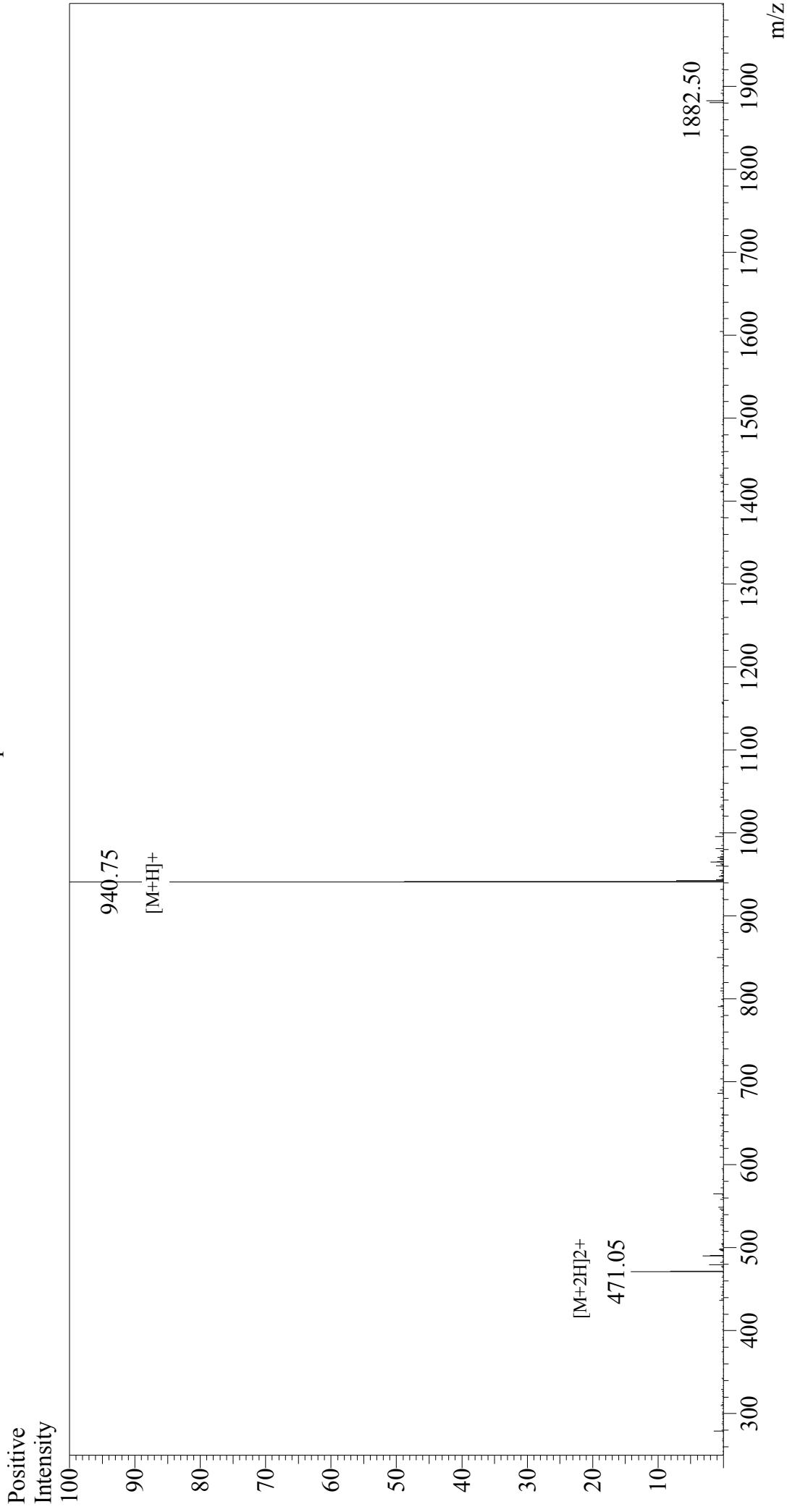


Mass Spectrum



Sample Information

Acquired by : Gary
Month-Day Processed : 11/04/17
Time Processed : 9:37:48
Injection Volume : 0.2
Sample Name : Influenza HA (518-526)
Cat. No. : RP20284
Lot. No. : PE4501710
Theoretical MW : 940.05
Observed MW : 939.75

Interface : ESI
Nebulizing Gas Flow : 1.5L/min
CDL Temp : 250°C
Block Temp : 200°C

Interface Bias : +4.5 kV
Drying Gas Flow : 5 L/min
T.Flow : 0.2 ml/min
B.conc : 50%H2O/50%MeOH