

Sample Name : PACAP(1-27),human,ovine,rat
 Cat No.:RP10334
 Lot No.:PE2991803

Pump A : 0.065% trifluoroacetic in 100% water (v/v)
 Pump B : 0.05% trifluoroacetic in 100% acetonitrile (v/v)
 Total Flow:1 ml/min
 Wavelength:220 nm

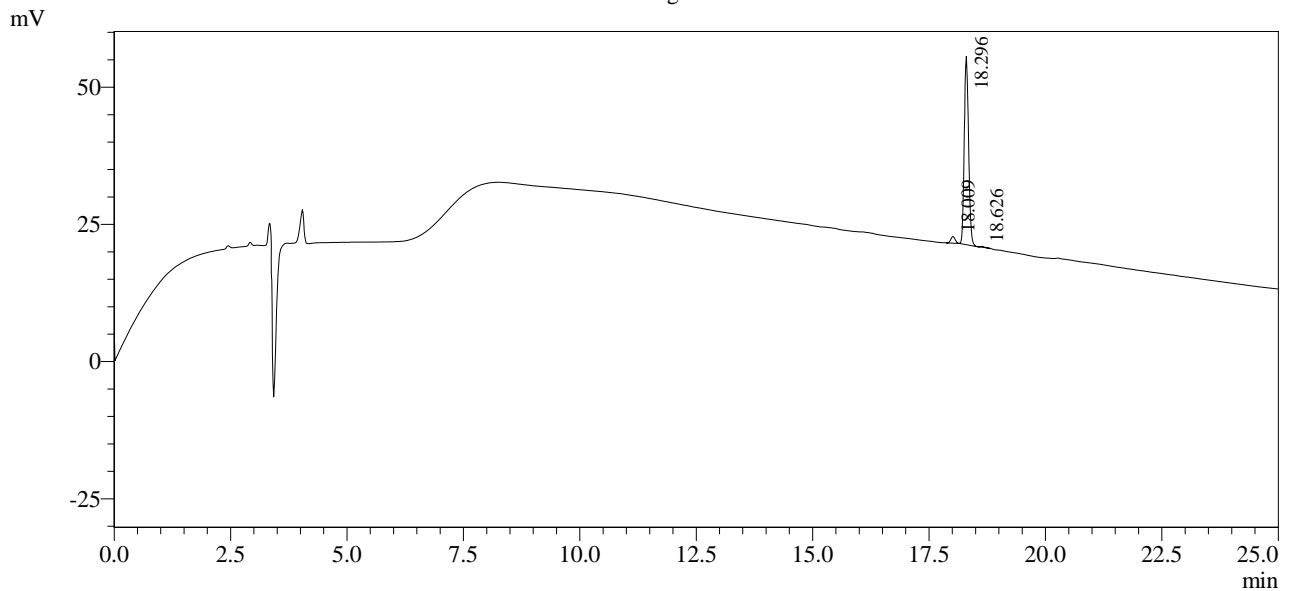
| Time | Unit | Command | Value | Comment |
|-------|------------|---------------|-------|---------|
| 0.01 | Pumps | Pump A B.Conc | 5 | |
| 25.00 | Pumps | Pump A B.Conc | 65 | |
| 25.01 | Pumps | Pump A B.Conc | 95 | |
| 27.00 | Pumps | Pump A B.Conc | 95 | |
| 27.01 | Pumps | Pump A B.Conc | 5 | |
| 35.00 | Pumps | Pump A B.Conc | 5 | |
| 35.01 | Controller | Stop | | |

<<Column Performance>>

<Detector A>

Column : Inertsil ODS-3 4.6 x 250 mm

Chromatogram



1 Det.A Ch1 / 220nm

Peak Table

Detector A Ch1 220nm

| Peak# | Ret. Time | Area | Height | Area % |
|-------|-----------|--------|--------|---------|
| 1 | 18.009 | 7774 | 1192 | 3.366 |
| 2 | 18.296 | 222344 | 34303 | 96.276 |
| 3 | 18.626 | 826 | 138 | 0.358 |
| Total | | 230944 | 35634 | 100.000 |