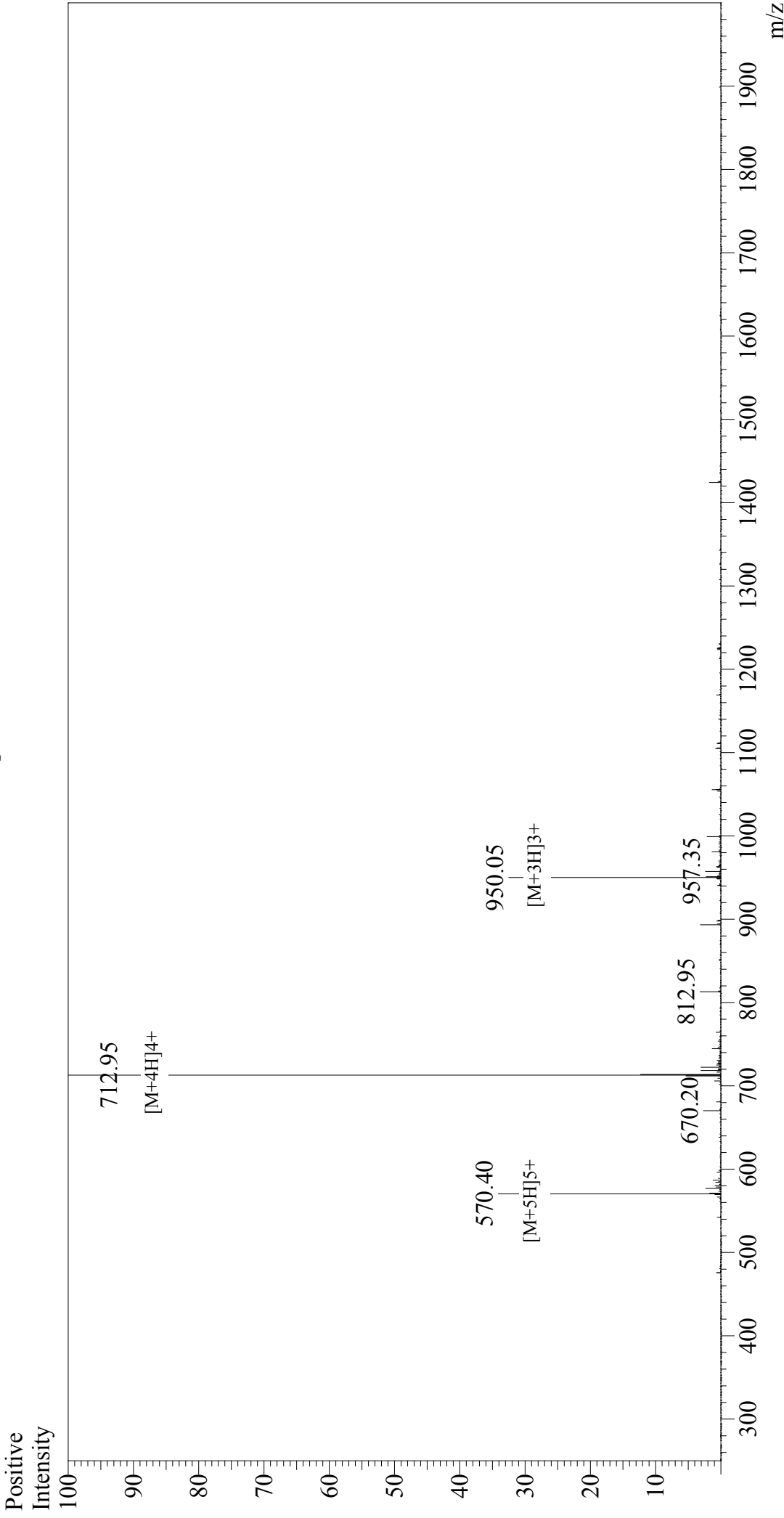


# Mass Spectrum



## Sample Information

Acquired by : Gary  
Month-Day Processed : 10/20/17  
Time Processed : 11:43:15  
Injection Volume : 0.2  
Sample Name : Melittin\_honey\_bee  
Cat. No. : RP20415  
Lot. No. : PE6731710  
Theoretical MW : 2847.50  
Observed MW : 2847.80

Interface : ESI  
Nebulizing Gas Flow : 1.5L/min  
CDL Temp : 250°C  
Block Temp : 200°C

Interface Bias  
Drying Gas Flow  
T.Flow  
B.conc

: +4.5 kV  
: 5 L/min  
: 0.2 ml/min  
: 50% H<sub>2</sub>O/50% MeOH