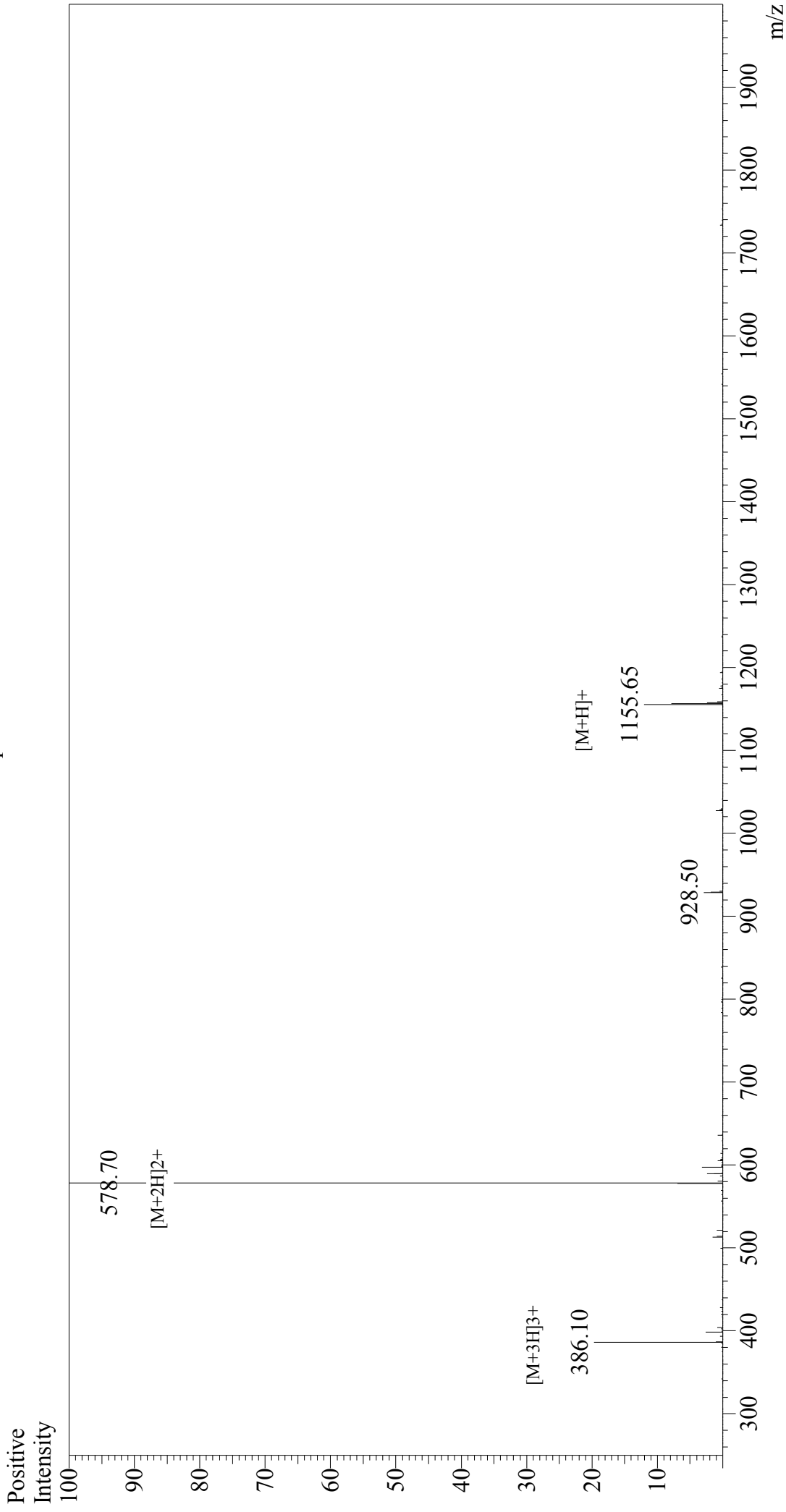


Mass Spectrum



Sample Information

Acquired by : Gary
Month-Day Processed : 09/21/17
Time Processed : 17:00:29
Injection Volume : 0.2
Sample Name : hgp100(25-33)
Cat No. : RP20344
Lot No. : PE2451709
Theoretical MW : 1155.30
Observed MW : 1155.40

Interface : ESI
Nebulizing Gas Flow : 1.5L/min
CDL Temp : 250°C
Block Temp : 200°C

Interface Bias : +4.5 kV
Drying Gas Flow : 5 L/min
T.Flow : 0.2 ml/min
B.conc : 50% H_2O /50% $MeOH$