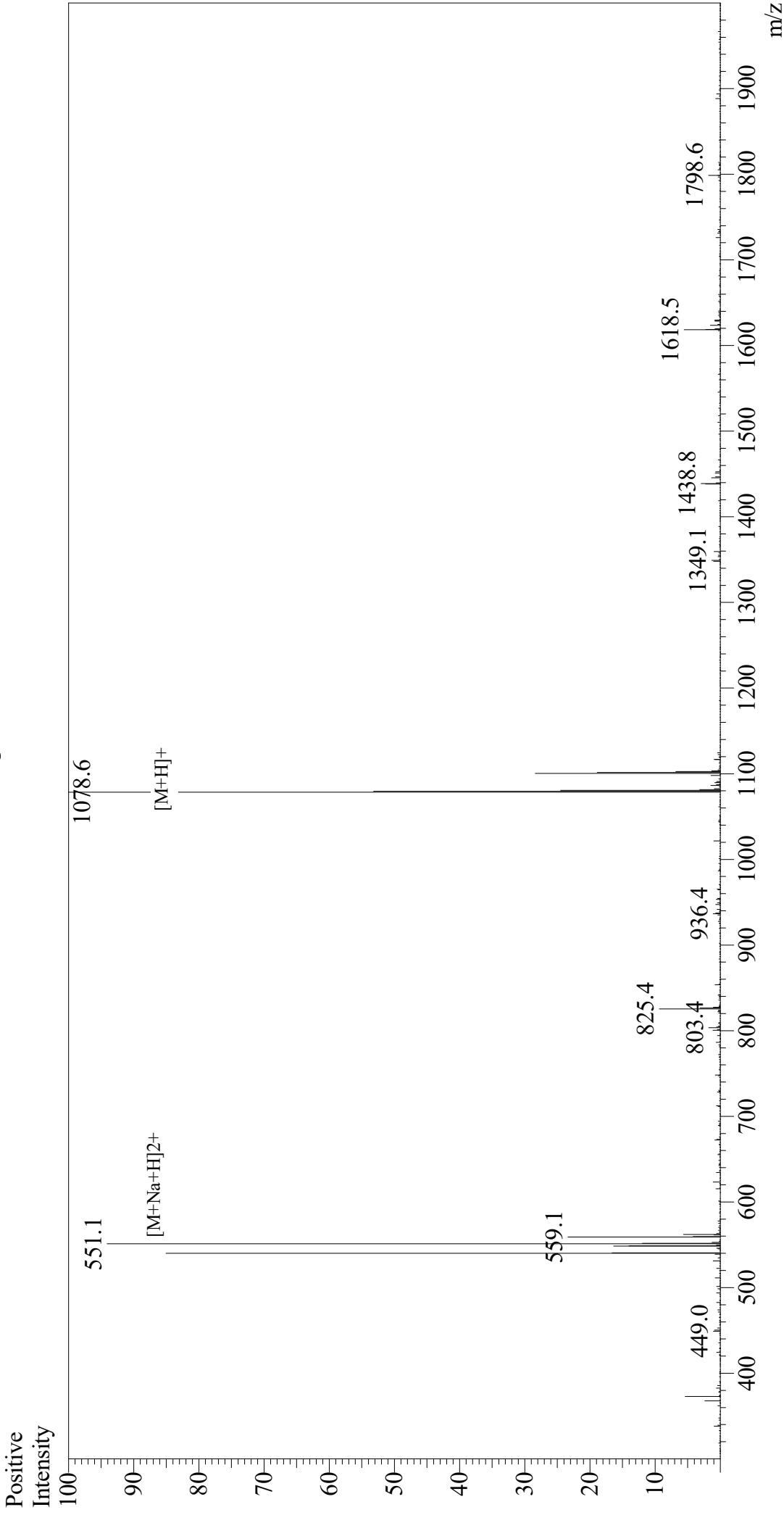


# Mass Spectrum



## Sample Information

Acquired by: Gary  
Month-Day Processed: 12/21/19  
Time Processed: 06:16:12 PM  
Injection Volume: 0.8  
Sample Name: NP (396-404)  
Cat. No.: RP20090  
Lot. No.: E9143819L  
Theoretical MW: 1078.18  
Observed MW: 1077.6

Interface: ESI  
Nebulizing Gas Flow: 1.5L/min  
CDL Temp: 250  
Block Temp: 200

Equipment: GK11010007  
Interface Bias: +4.5 kV  
Drying Gas Flow: 5 L/min  
T.Flow: 0.2 ml/min  
B.conc: 50% H2O/50% MeOH