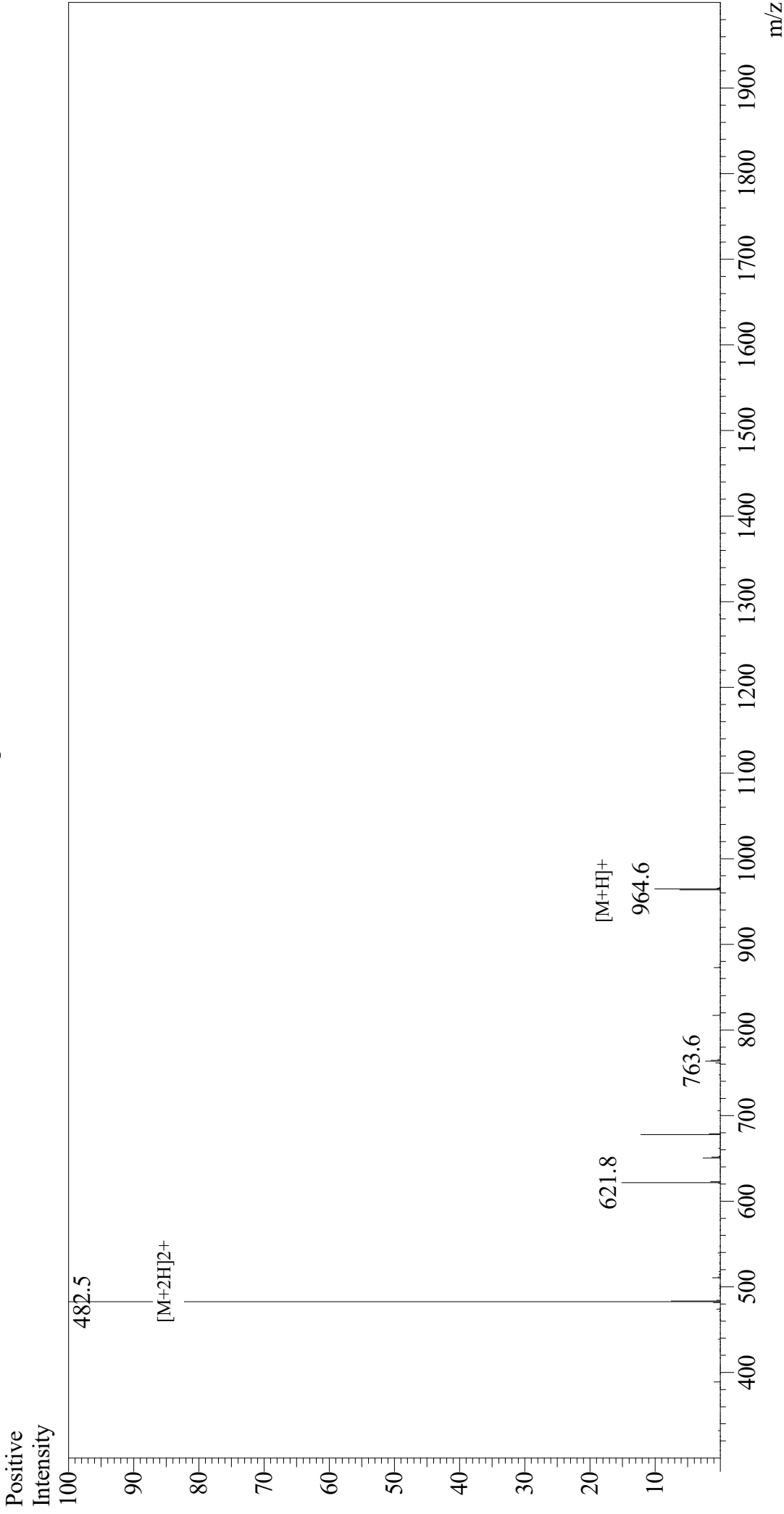


# Mass Spectrum



## Sample Information

Acquired by : Gary  
Month-Day Processed : 07/21/19  
Time Processed : 09:00:53 AM  
Injection Volume : 0.3  
Sample Name : OVA Peptide (257-264)  
Cat. No. : RP10611  
Lot. No. : E5168219G  
Theoretical MW : 963.13  
Observed MW : 963.0

## Interface : ESI

Nebulizing Gas Flow : 1.5L/min  
CDL Temp : 250  
Block Temp : 200

## Equipment

Interface Bias : +4.5 kV  
Drying Gas Flow : 5 L/min  
T.Flow : 0.2 ml/min  
B.conc : 50% H2O/50% MeOH

: GK11010007