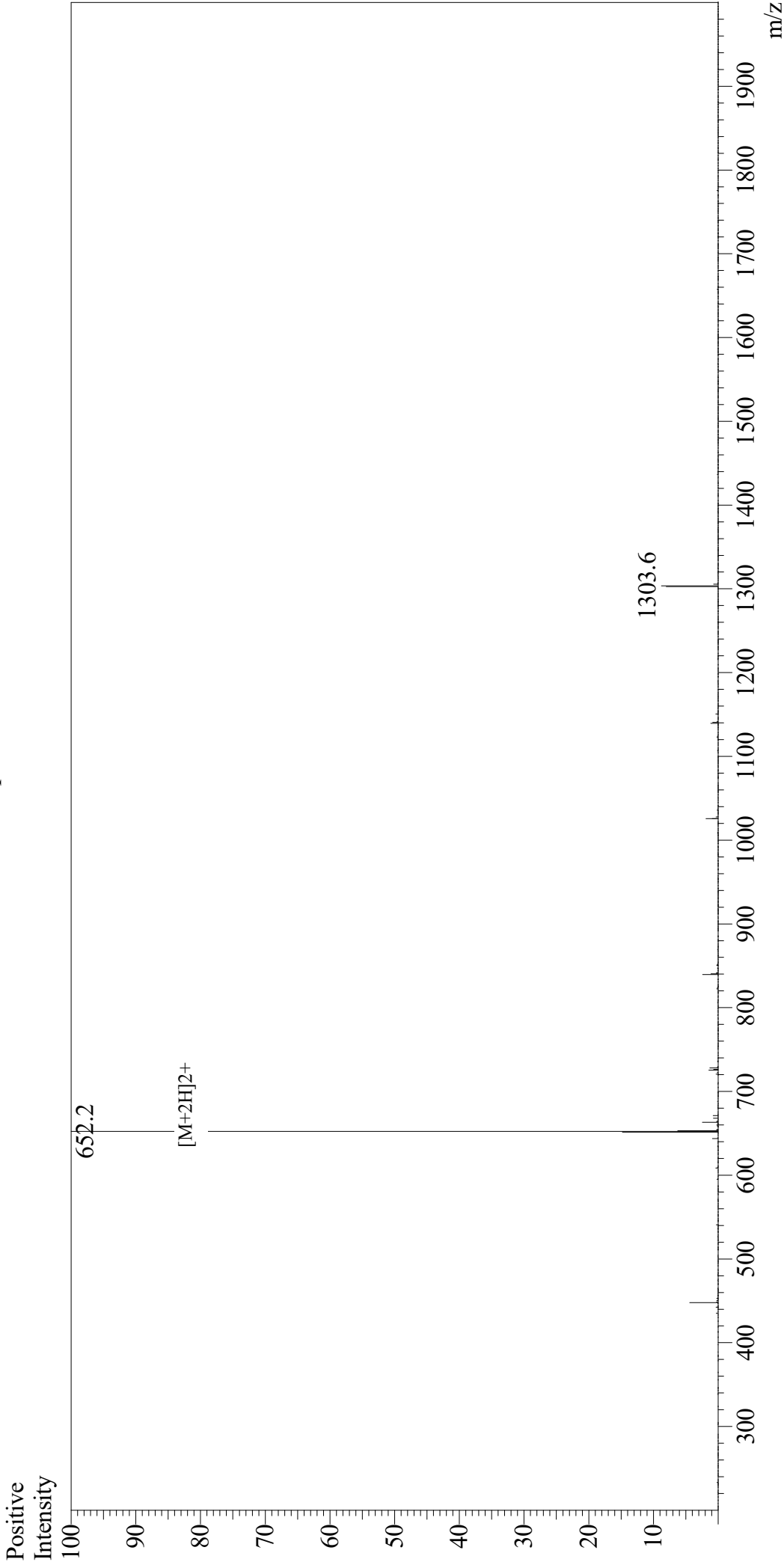


# Mass Spectrum



## Sample Information

User : Gary  
Month-Day Processed : 07/01/19  
Time Processed : 10:40:40 PM  
Injection Volume : 0.3  
Sample Name : Kisspeptin-10  
Cat No. : RP20494  
Lot No. : E0909019G  
Theoretical MW : 1302.50  
Observed MW : 1302.4

Interface : ESI  
Nebulizing Gas Flow : 1.5L/min  
CDL Temp : 250  
Block Temp : 200

Equipment : GK11010007  
Interface Bias : +4.5kV  
Drying Gas Flow : 5 L/min  
T.Flow : 0.2ml/min  
B.conc : 50%H2O/50%MeOH