

Sample Name :Carcinoembryonic Antigen (CEA)
 Cat No. :RP20328
 Lot No. :E4915319I
 Time Processed :7:42:45
 Month-Day-Year Processed :09/19/19

Pump A : 0.065% trifluoroacetic in 100% water (v/v)
 Pump B : 0.05% trifluoroacetic in 100% acetonitrile (v/v)
 Total Flow:1 ml/min
 Wavelength:220 nm

<<LC Time Program>>

Time	Module	Command	Value
0.01	Pumps	Solvent B Conc.	5
25.00	Pumps	Solvent B Conc.	65
25.01	Pumps	Solvent B Conc.	95
27.00	Pumps	Solvent B Conc.	95
27.01	Pumps	Solvent B Conc.	5
33.00	Pumps	Solvent B Conc.	5
33.01	Controller	Stop	

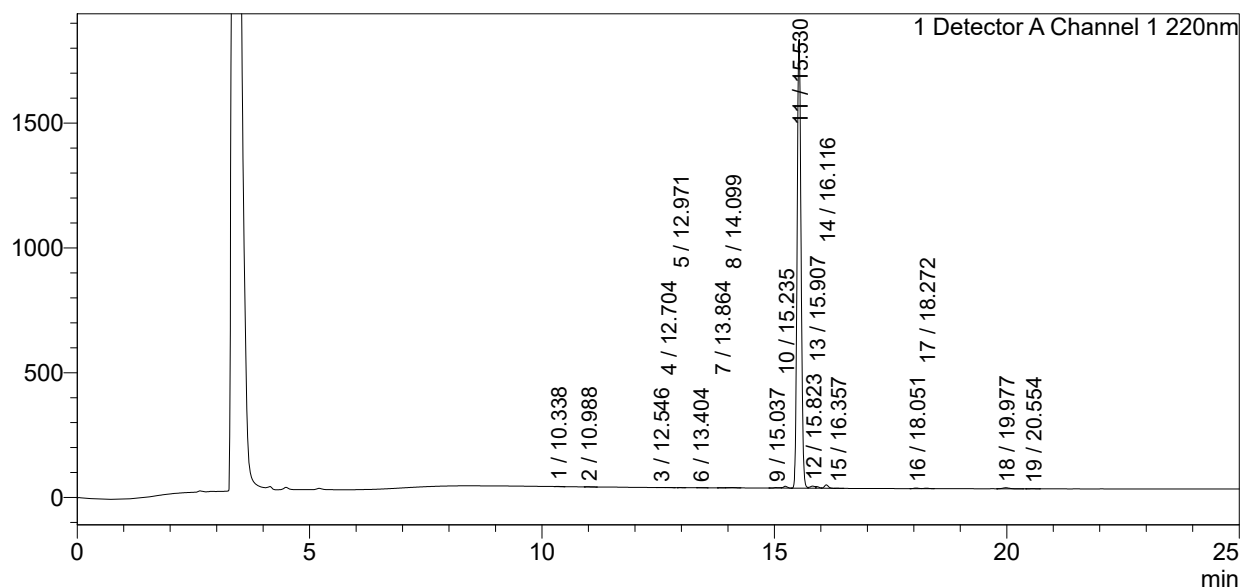
<<Column Performance>>

<Detector A>

Column : Inertsil ODS-3 4.6 x 250 mm
 Equipment: ZJ17010508

<Chromatogram>

mV



<Peak Table>

Detector A Channel 1 220nm

Peak#	Ret. Time	Area	Height	Area%
1	10.338	3129	655	0.028
2	10.988	4576	545	0.042
3	12.546	1558	339	0.014
4	12.704	1813	338	0.017
5	12.971	1386	285	0.013
6	13.404	1905	338	0.017
7	13.864	4177	661	0.038
8	14.099	15658	1517	0.143
9	15.037	16872	1937	0.154
10	15.235	42552	7358	0.388
11	15.530	10633466	1797665	96.844
12	15.823	63148	8264	0.575
13	15.907	29090	6478	0.265
14	16.116	80881	13741	0.737
15	16.357	2011	403	0.018

Peak#	Ret. Time	Area	Height	Area%
16	18.051	16728	2472	0.152
17	18.272	14012	2060	0.128
18	19.977	41854	4126	0.381
19	20.554	5124	706	0.047
Total		10979940	1849889	100.000