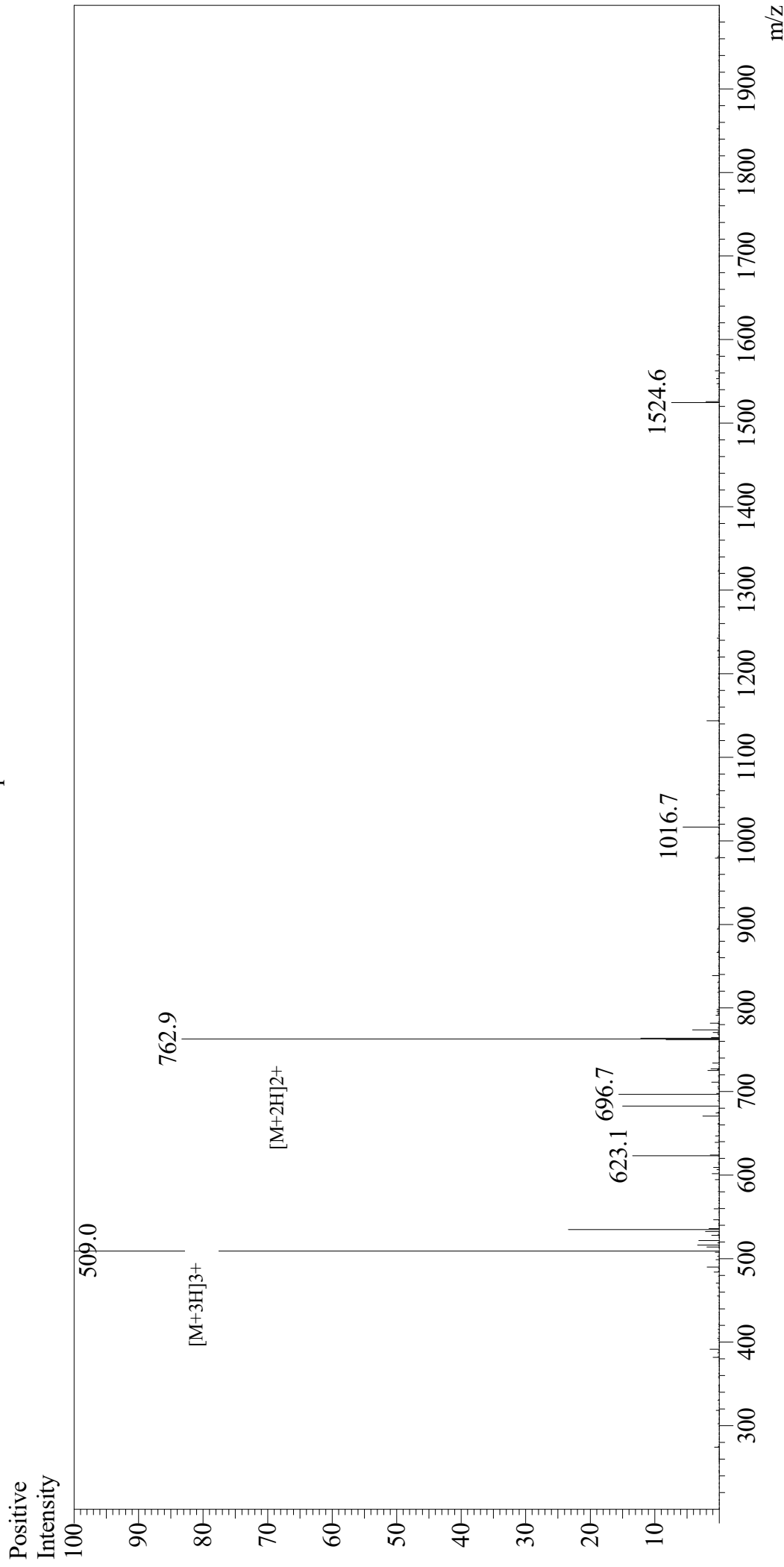


Mass Spectrum



Sample Information

User :	Gary	Equipment	: GK11010007
Month-Day Processed :	03/24/19	Interface Bias	: +4.5kV
Time Processed :	08:56:41 AM	Drying Gas Flow	: 5 L/min
Injection Volume :	0.2	T.Flow	: 0.2ml/min
Sample Name :	Osteogenic Growth Peptide, OGP	B.conc	: 50%H2O/50%MeOH
Cat No. :	RP20311	Interface	: ESI
Lot No. :	PE8741903	Nebulizing Gas Flow	: 1.5L/min
Theoretical MW :	1523.76	CDL Temp	: 250
Observed MW :	1524.0	Block Temp	: 200