

Sample Name : Exendin-4
 Cat. No. : RP10874
 Lot. No. : E4703320K

Time Processed : 9:53:58 PM
 Month-Day-Year Processed : 11/13/2020

Pump A : 0.065% trifluoroacetic in 100% water (v/v)
 Pump B : 0.05% trifluoroacetic in 100% acetonitrile (v/v)
 Total Flow: 1 ml/min
 Wavelength: 220 nm

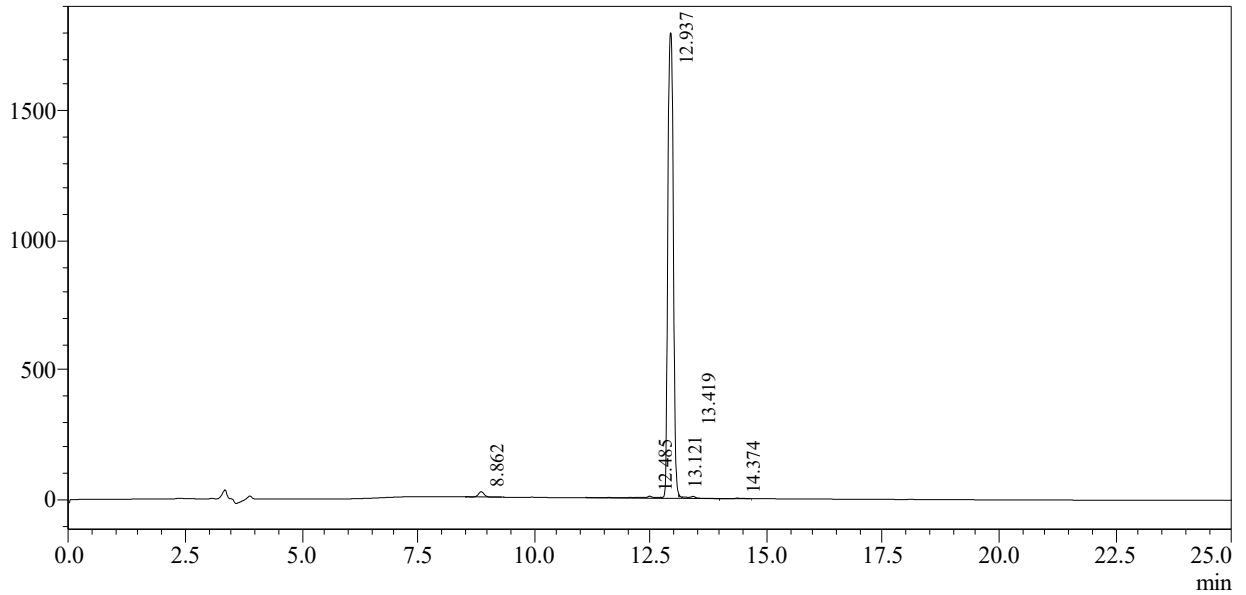
| Time | Module | Command | Value |
|-------|------------|---------------|-------|
| 0.01 | Pumps | Pump A B.Conc | 15 |
| 25.00 | Pumps | Pump A B.Conc | 75 |
| 25.01 | Pumps | Pump A B.Conc | 95 |
| 32.00 | Pumps | Pump A B.Conc | 95 |
| 32.01 | Pumps | Pump A B.Conc | 15 |
| 40.00 | Pumps | Pump A B.Conc | 15 |
| 45.00 | Controller | Stop | |

<<Column Performance>>

<Detector A>

Column : Inertsil ODS-3 4.6 x 250 mm
 Equipment: GK11010017

mV



1 Detector A Channel 1 / 220nm

Peak Table

Detector A Channel 1 220nm

| Peak# | Ret. Time | Area | Height | Area % |
|-------|-----------|----------|---------|---------|
| 1 | 8.862 | 173690 | 20617 | 1.148 |
| 2 | 12.485 | 156501 | 7530 | 1.034 |
| 3 | 12.937 | 14637498 | 1796275 | 96.752 |
| 4 | 13.121 | 32669 | 13865 | 0.216 |
| 5 | 13.419 | 108094 | 7732 | 0.714 |
| 6 | 14.374 | 20404 | 1944 | 0.135 |
| Total | | 15128857 | 1847964 | 100.000 |