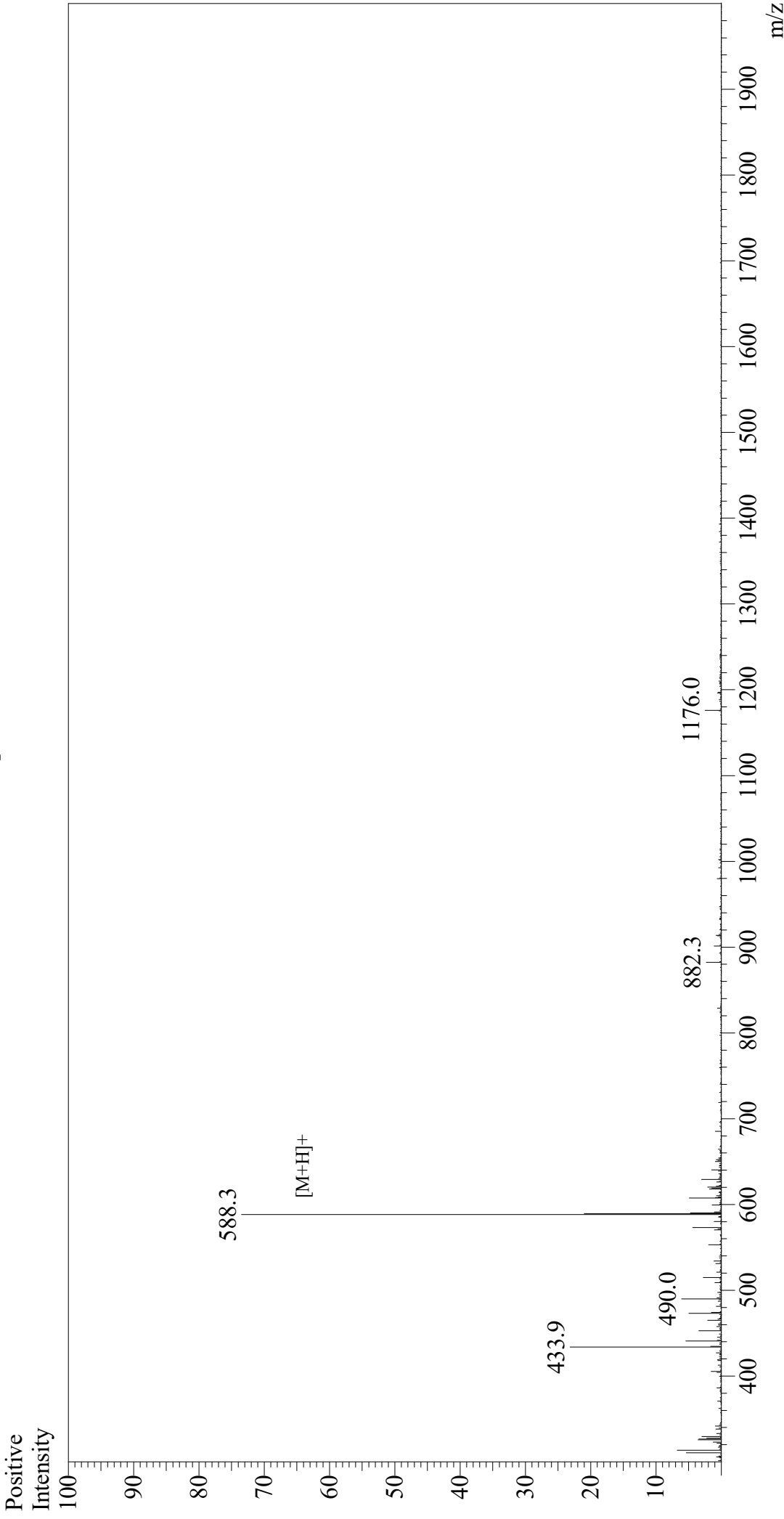


Mass Spectrum



Sample Information

Acquired by : Gary
Month-Day Processed : 08/10/18
Time Processed : 7:52:35
Injection Volume : 0.4
Sample Name : GRGDSP
Cat. No. : RP20255
Lot. No. : PE6471808
Theoretical MW : 587.59
Observed MW : 587.3

Interface : ESI
Nebulizing Gas Flow : 1.5L/min
CDL Temp : 250°C
Block Temp : 200°C
Interface Bias : +4.5 kV
Drying Gas Flow : 5 L/min
T.Flow : 0.2 ml/min
B.conc : 50%H2O/50%MeOH