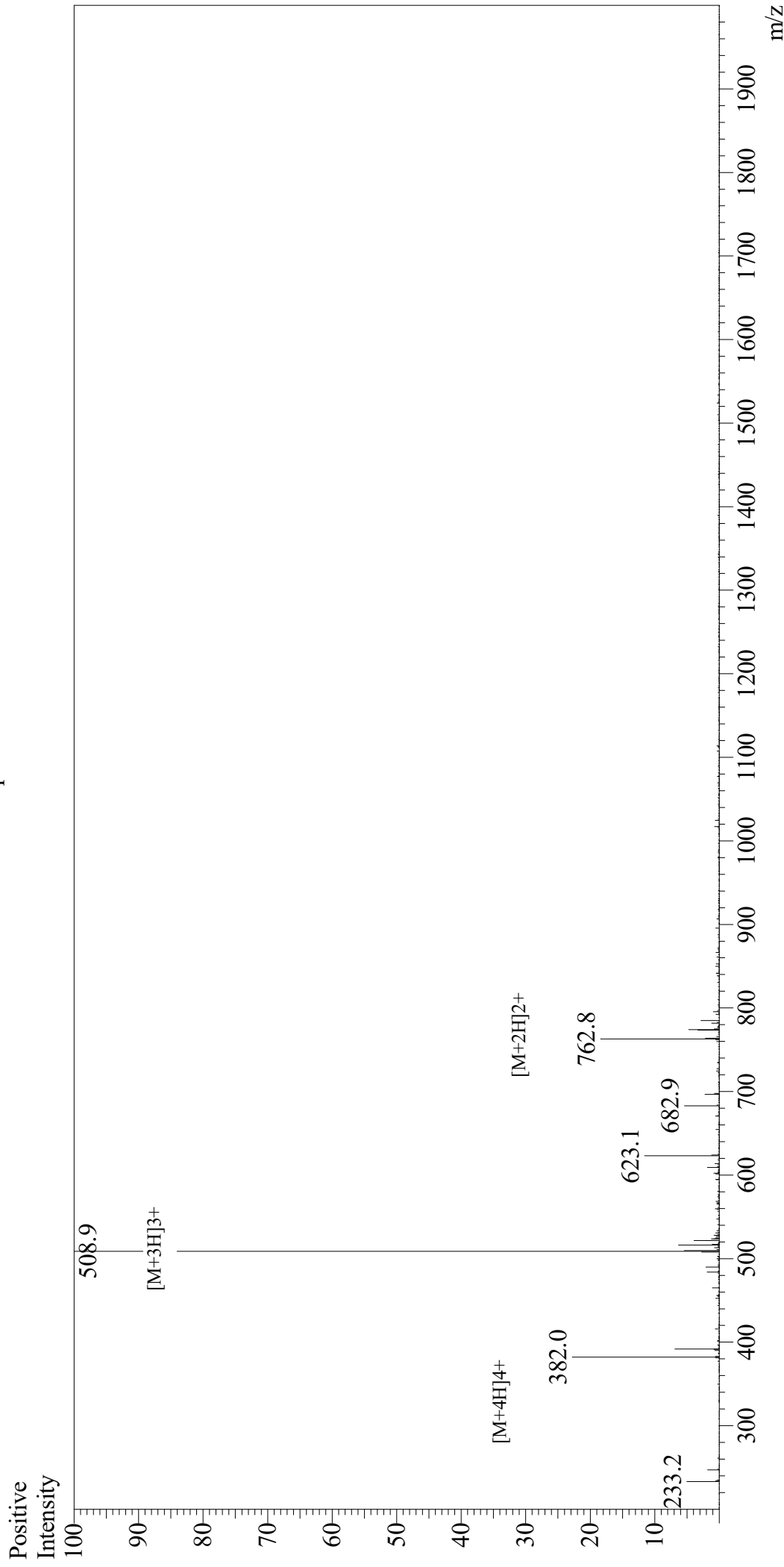


Mass Spectrum



Sample Information

User : Gary
Month-Day Processed : 12/18/19
Time Processed : 09:02:57 PM
Injection Volume : 0.3
Sample Name : Osteogenic Growth Peptide, OGP
Cat No. : RP20311
Lot No. : E9579319L
Theoretical MW : 1523.76
Observed MW : 1523.7

Interface : ESI
Nebulizing Gas Flow : 1.5L/min
CDL Temp : 250
Block Temp : 200

Equipment : GK11010007
Interface Bias : +4.5kV
Drying Gas Flow : 5 L/min
T.Flow : 0.2ml/min
B.conc : 50%H₂O/50%MeOH