

Sample Name : OVA Peptide (323-339)
 Cat. No. : RP10610
 Lot. No. : PE7941902
 Time Processed : 9:08:24
 Month-Day-Year Processed : 03/03/2019

Pump A : 0.065% trifluoroacetic in 100% water (v/v)
 Pump B : 0.05% trifluoroacetic in 100% acetonitrile (v/v)
 Total Flow:1 ml/min
 Wavelength:220 nm

| Time | Unit | Command | Value | Comment |
|-------|------------|--------------|-------|---------|
| 0.01 | Pumps | Pump B Conc. | 5 | |
| 25.00 | Pumps | Pump B Conc. | 65 | |
| 25.01 | Pumps | Pump B Conc. | 95 | |
| 31.00 | Pumps | Pump B Conc. | 95 | |
| 31.01 | Pumps | Pump B Conc. | 5 | |
| 40.00 | Pumps | Pump B Conc. | 5 | |
| 40.01 | Controller | Stop | | |

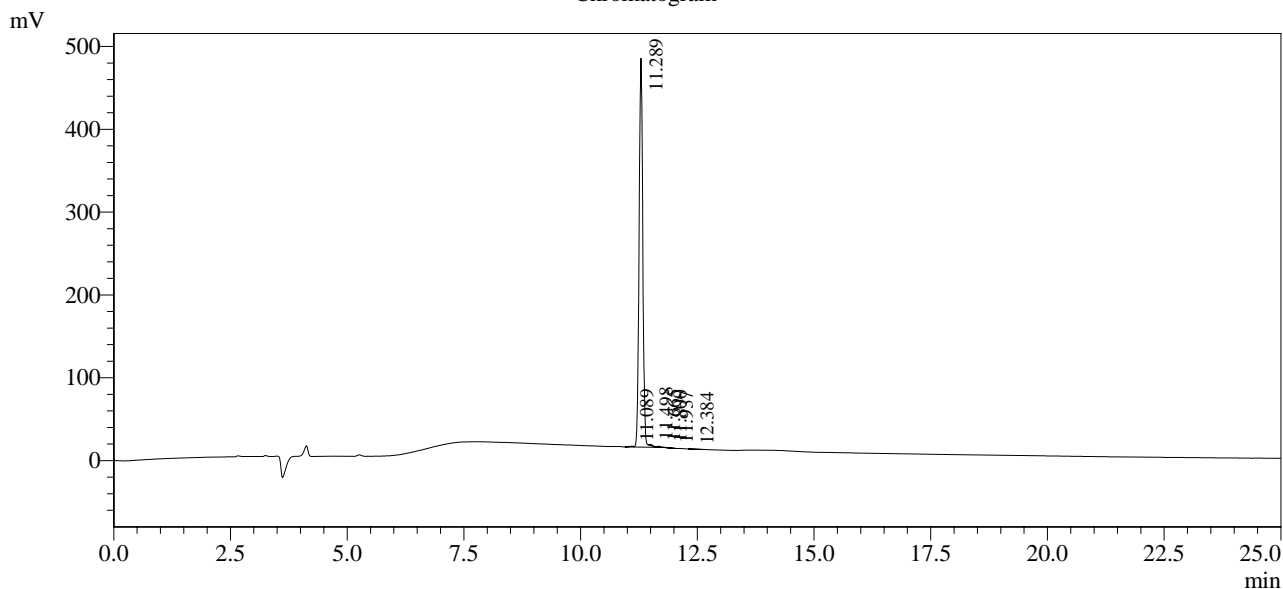
<<Column Performance>>

<Detector A>

Column :Inertsil ODS-3 4.6 x 250 mm

Equipment: SS-CM-0309

Chromatogram



1 Det.A Ch1 / 220nm

Peak Table

Detector A Ch1 220nm

| Peak# | Ret. Time | Area | Height | Area % |
|-------|-----------|---------|--------|---------|
| 1 | 11.089 | 6330 | 984 | 0.242 |
| 2 | 11.289 | 2591412 | 469584 | 99.184 |
| 3 | 11.498 | 4790 | 1129 | 0.183 |
| 4 | 11.665 | 4311 | 1014 | 0.165 |
| 5 | 11.800 | 1520 | 407 | 0.058 |
| 6 | 11.937 | 1945 | 393 | 0.074 |
| 7 | 12.384 | 2424 | 198 | 0.093 |
| Total | | 2612732 | 473709 | 100.000 |