

Sample Name :Mast Cell Degranulating Peptide  
 Cat. No. : RP10663  
 Lot. No. : PE9361901  
 Time Processed :9:22:18  
 Month-Day-Year Processed : 01/23/2019

Pump A : 0.065% trifluoroacetic in 100% water (v/v)  
 Pump B : 0.05% trifluoroacetic in 100% acetonitrile (v/v)  
 Total Flow:1 ml/min  
 Wavelength:220 nm

| Time  | Unit       | Command       | Value | Comment |
|-------|------------|---------------|-------|---------|
| 0.01  | Pumps      | Pump A B.Conc | 5     |         |
| 25.00 | Pumps      | Pump A B.Conc | 65    |         |
| 25.01 | Pumps      | Pump A B.Conc | 95    |         |
| 27.00 | Pumps      | Pump A B.Conc | 95    |         |
| 27.01 | Pumps      | Pump A B.Conc | 5     |         |
| 35.00 | Pumps      | Pump A B.Conc | 5     |         |
| 35.01 | Controller | Stop          |       |         |

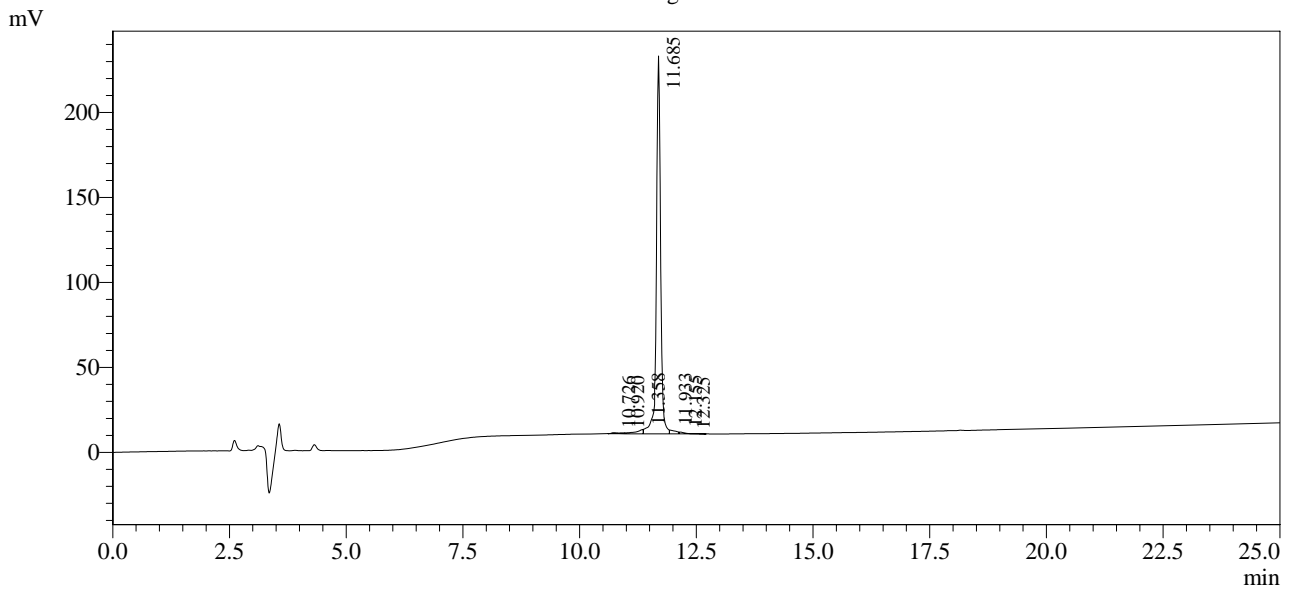
<<Column Performance>>

<Detector A>

Column : Inertsil ODS-3 4.6 x 250 mm

Equipment: SS-CM-0286

Chromatogram



1 Det.A Ch1 / 220nm  
 Detector A Ch1 220nm

| Peak# | Ret. Time | Area    | Height | Area %  |
|-------|-----------|---------|--------|---------|
| 1     | 10.726    | 5764    | 616    | 0.394   |
| 2     | 10.920    | 3839    | 539    | 0.263   |
| 3     | 11.358    | 28768   | 2530   | 1.968   |
| 4     | 11.685    | 1392477 | 222381 | 95.271  |
| 5     | 11.933    | 20854   | 2249   | 1.427   |
| 6     | 12.155    | 7544    | 1023   | 0.516   |
| 7     | 12.325    | 2341    | 246    | 0.160   |
| Total |           | 1461589 | 229583 | 100.000 |