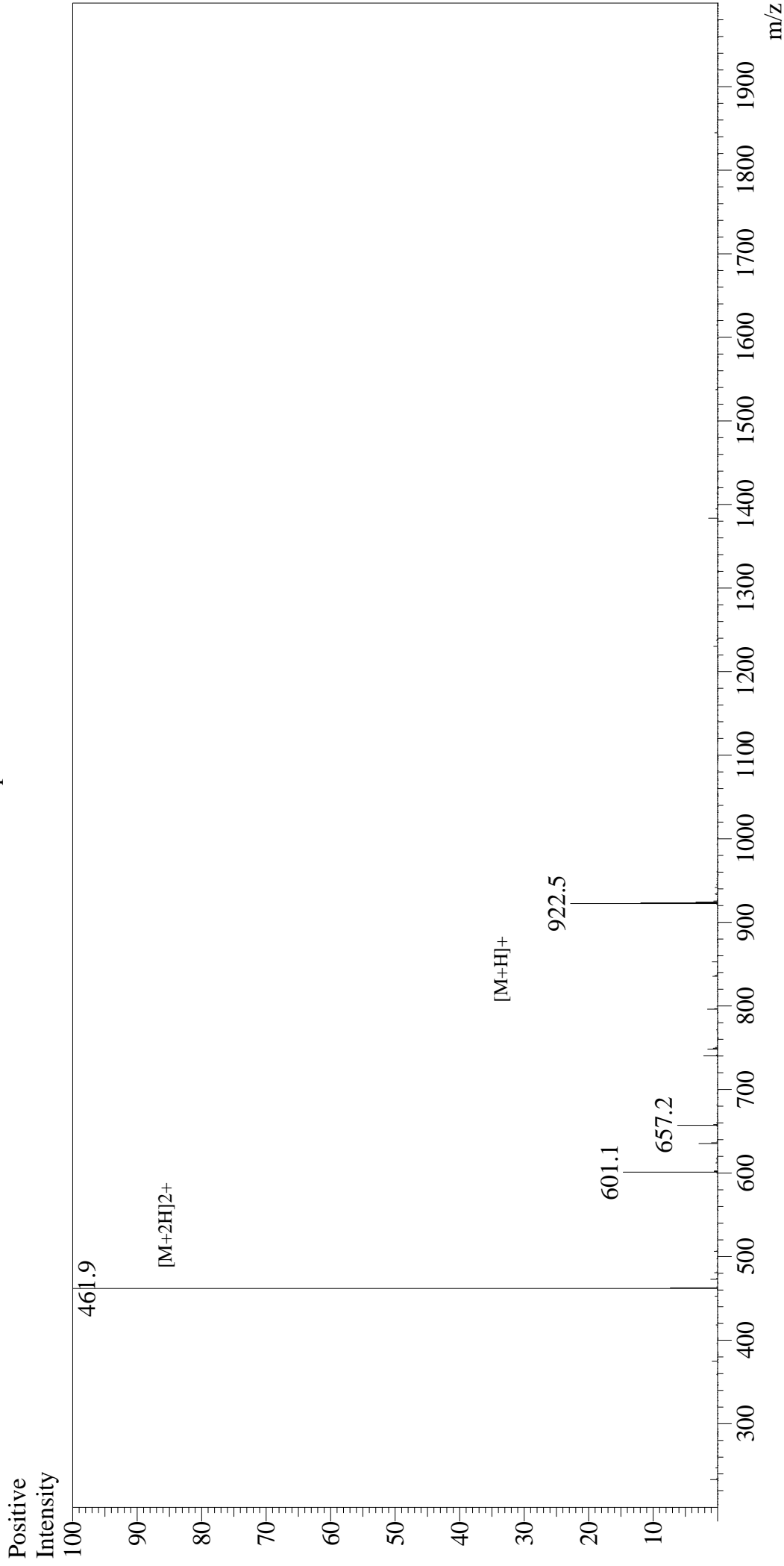


# Mass Spectrum



## Sample Information

User : Gary  
Month-Day Processed : 09/18/19  
Time Processed : 19:48:50  
Injection Volume : 0.3  
Sample Name : HSV-gB2 (498-505)  
Cat No. : RP19992  
Lot No. : E4830719I  
Theoretical MW : 922.04  
Observed MW : 921.8

Interface : ESI  
Nebulizing Gas Flow : 1.5L/min  
CDL Temp : 250  
Block Temp : 200

Equipment : GK11010007  
Interface Bias : +4.5kV  
Drying Gas Flow : 5 L/min  
T.Flow : 0.2ml/min  
B.conc : 50%H2O/50%MeOH