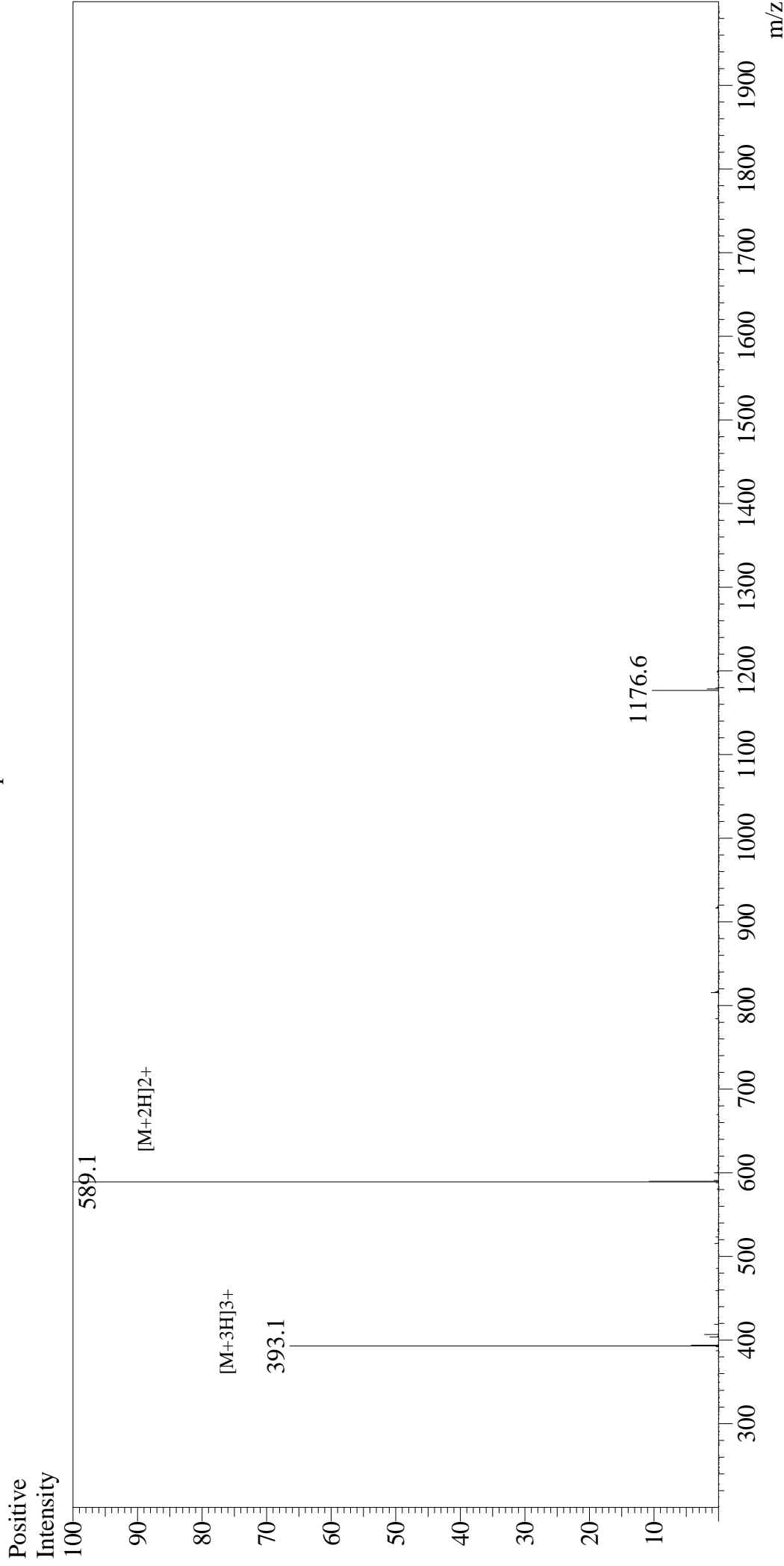


Mass Spectrum



Sample Information

User : Gary
Month-Day Processed : 10/11/19
Time Processed : 19:13:32
Injection Volume : 0.3
Sample Name : PSA1 (141-150)
Cat No. : RP20434
Lot No. : E5585619J
Theoretical MW : 1176.50
Observed MW : 1176.2

Interface : ESI
Nebulizing Gas Flow : 1.5L/min
CDL Temp : 250
Block Temp : 200

Equipment : GK11010007
Interface Bias : +4.5kV
Drying Gas Flow : 5 L/min
T.Flow : 0.2ml/min
B.conc : 50%H2O/50%MeOH