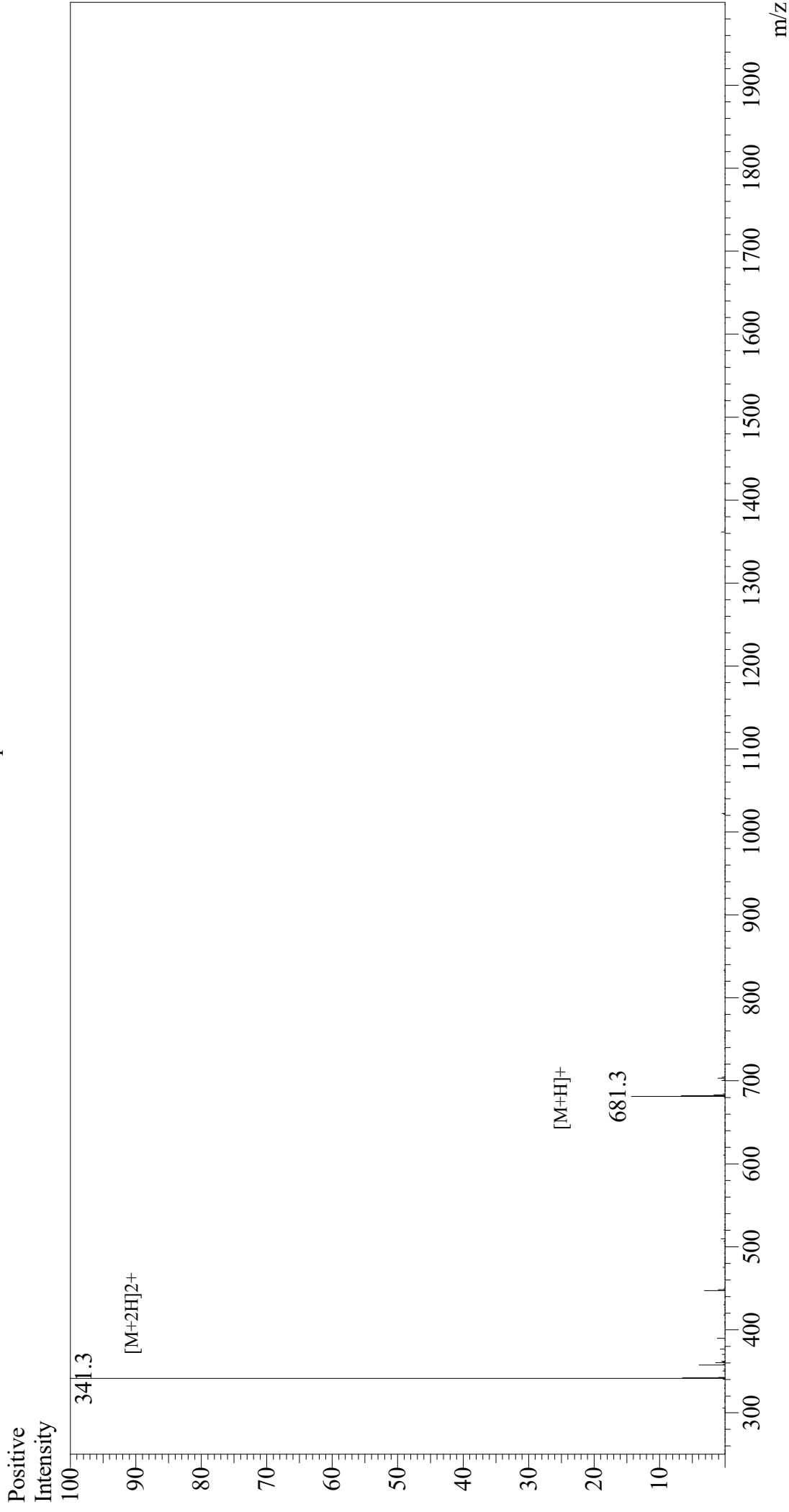


Mass Spectrum



Sample Information
Month-Day Processed : 07/22/21
Time Processed : 10:43:05 AM
Injection Volume : 0.4
Sample Name : PAR-4 Agonist Peptide, amide
Cat No. : RP11529
Lot No. : E6814921G
Theoretical MW : 680.80
Observed MW : 680.6

Interface : ESI
Nebulizing Gas Flow : 1.5L/min
CDL Temp : 250
Block Temp : 200

Equipment : GK11010007
Interface Bias : +3.5 kV
Drying Gas Flow : 5 L/min
T.Flow : 0.2 ml/min
B.conc : 50%H2O/50%MeOH