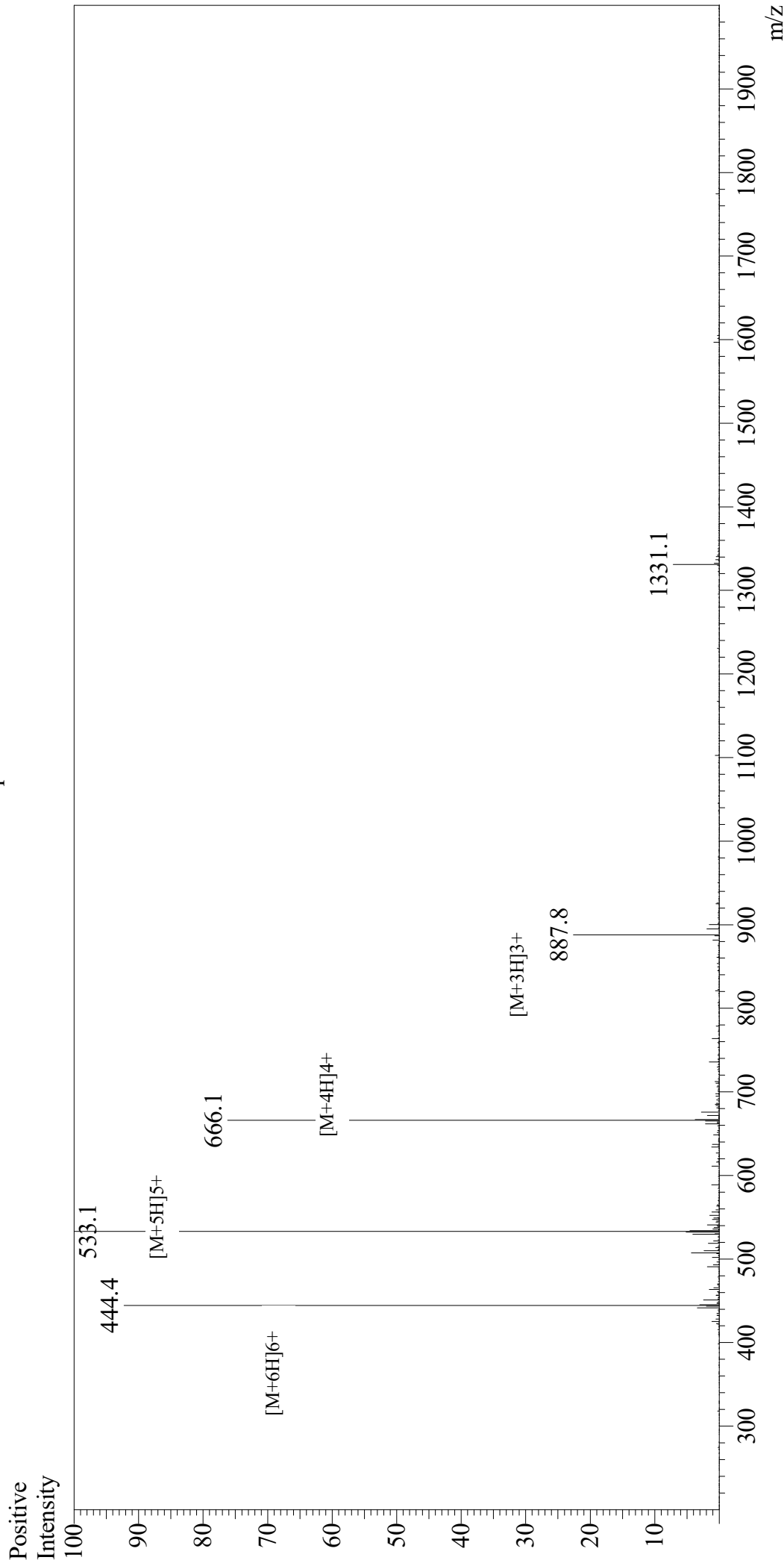


Mass Spectrum



Sample Information

User : Gary
Month-Day Processed : 03/23/19
Time Processed : 08:18:23 AM
Injection Volume : 0.2
Sample Name : U1698EC200-1
Cat No. : RP10648
Lot No. : PE5881903
Theoretical MW : 2661.00
Observed MW : 2660.5

Interface : ESI
Nebulizing Gas Flow : 1.5L/min
CDL Temp : 250
Block Temp : 200

Equipment : GK11010007
Interface Bias : +4.5kV
Drying Gas Flow : 5 L/min
T.Flow : 0.2ml/min
B.conc : 50%H₂O/50%MeOH