

Sample Name : Apamin  
 Cat. No. :RP11002  
 Lot. No. :E4765019I  
 Time Processed :23:59:45  
 Month-Day-Year Processed :09/17/2019

Pump A : 0.065% trifluoroacetic in 100% water (v/v)  
 Pump B : 0.05% trifluoroacetic in 100% acetonitrile (v/v)  
 Total Flow:1 ml/min  
 Wavelength:220 nm

| Time  | Unit       | Command      | Value | Comment |
|-------|------------|--------------|-------|---------|
| 0.01  | Pumps      | Pump B Conc. | 15    |         |
| 25.00 | Pumps      | Pump B Conc. | 75    |         |
| 25.01 | Pumps      | Pump B Conc. | 95    |         |
| 31.00 | Pumps      | Pump B Conc. | 95    |         |
| 31.01 | Pumps      | Pump B Conc. | 0     |         |
| 40.00 | Pumps      | Pump B Conc. | 0     |         |
| 40.01 | Controller | Stop         |       |         |

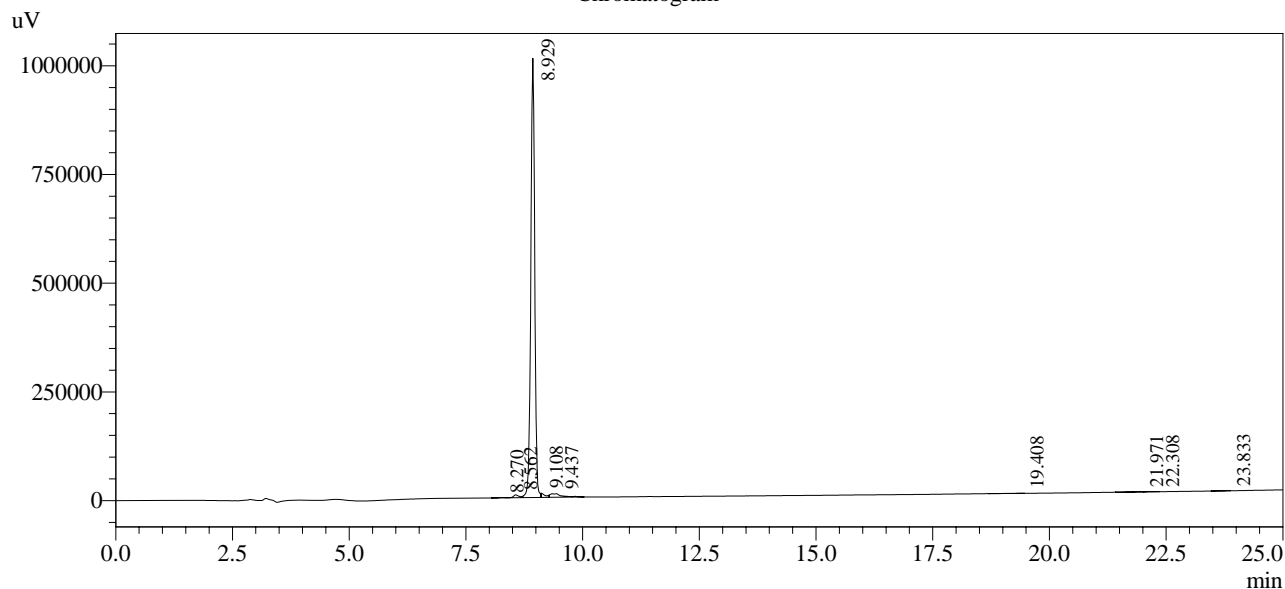
<<Column Performance>>

<Detector A>

Column : Inertsil ODS-3 4.6 x 250 mm

Equipment: GK11010009

Chromatogram



1 Det.A Ch1 / 220nm

Peak Table

Detector A Ch1 220nm

| Peak# | Ret. Time | Area    | Height  | Area %  |
|-------|-----------|---------|---------|---------|
| 1     | 8.270     | 5306    | 955     | 0.086   |
| 2     | 8.562     | 55072   | 6516    | 0.890   |
| 3     | 8.929     | 5917249 | 1010202 | 95.677  |
| 4     | 9.108     | 58589   | 9626    | 0.947   |
| 5     | 9.437     | 137511  | 8047    | 2.223   |
| 6     | 19.408    | 3700    | 115     | 0.060   |
| 7     | 21.971    | 3244    | 213     | 0.052   |
| 8     | 22.308    | 2305    | 57      | 0.037   |
| 9     | 23.833    | 1607    | 54      | 0.026   |
| Total |           | 6184583 | 1035786 | 100.000 |