

Sample Name : Calcitonin Gene Related Peptide (CGRP) (8-37), human
 Cat. No. : RP11089
 Lot. No. : E7009719J
 Time Processed : 16:12:14
 Month-Day-Year Processed : 10/09/2019

Pump A : 0.065% trifluoroacetic in 100% water (v/v)
 Pump B : 0.05% trifluoroacetic in 100% acetonitrile (v/v)
 Total Flow: 1 ml/min
 Wavelength: 220 nm

Time	Unit	Command	Value	Comment
0.01	Pumps	Pump A B.Conc	15	
25.00	Pumps	Pump A B.Conc	75	
31.00	Pumps	Pump A B.Conc	95	
32.00	Pumps	Pump A B.Conc	95	
32.01	Pumps	Pump A B.Conc	15	
40.00	Pumps	Pump A B.Conc	15	
40.00	Controller	Stop		

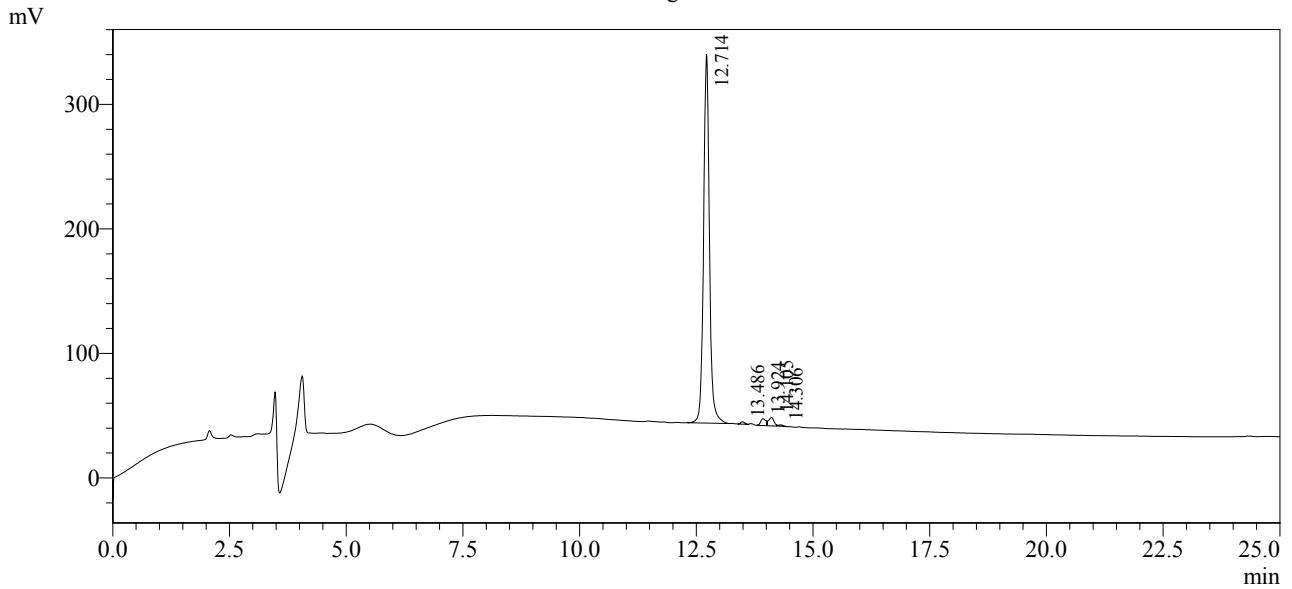
<<Column Performance>>

<Detector A>

Column : Inertsil ODS-3 4.6 x 250 mm

Equipment: GK11010009

Chromatogram



1 Det.A Ch1 / 220nm

Peak Table

Detector A Ch1 220nm

Peak#	Ret. Time	Area	Height	Area %
1	12.714	2580488	296181	95.736
2	13.486	10327	1801	0.383
3	13.924	43450	5548	1.612
4	14.105	53231	6910	1.975
5	14.306	7911	1117	0.293
Total		2695407	311557	100.000