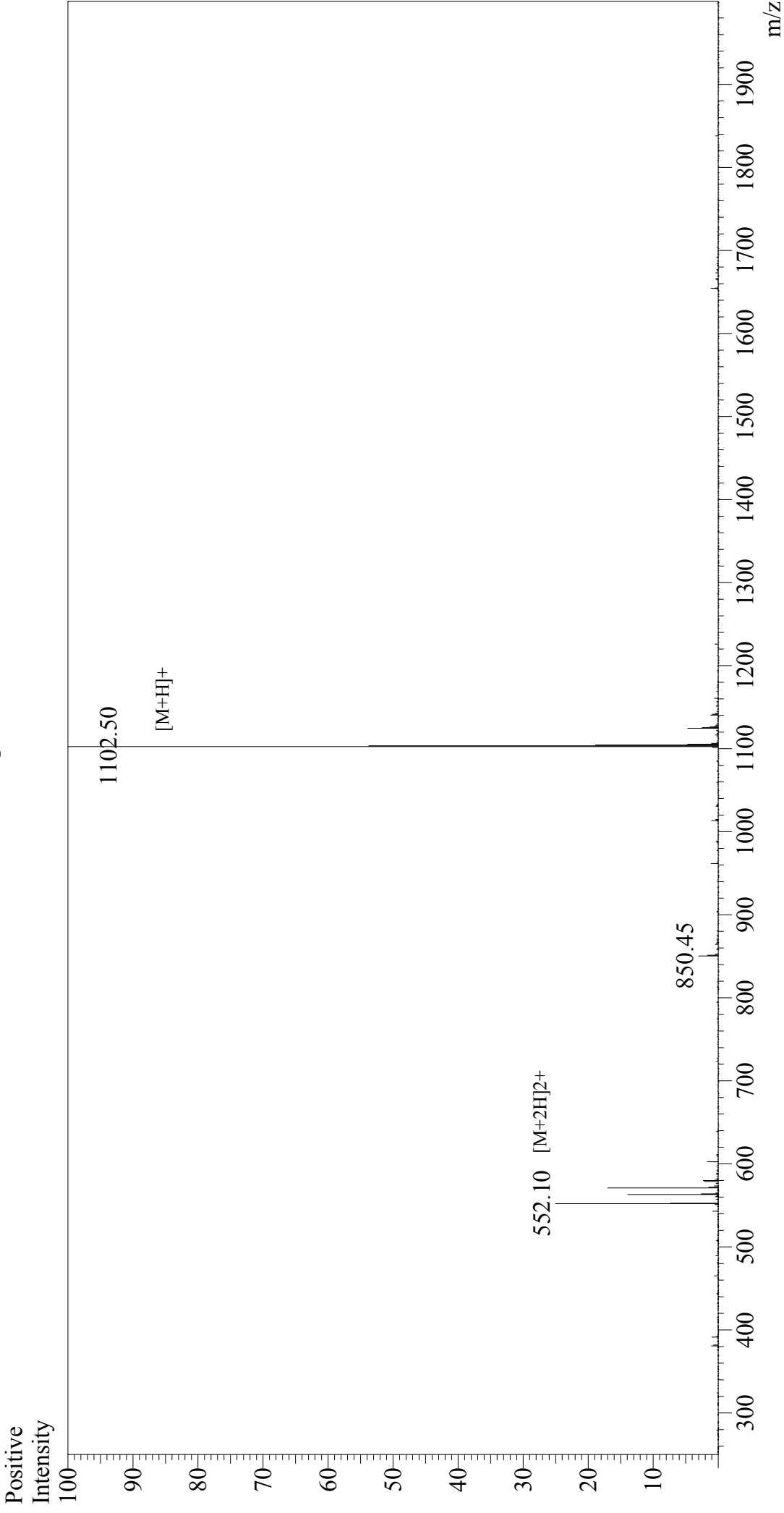


# Mass Spectrum



## Sample Information

Acquired by : Gary  
Month-Day Processed : 10/20/17  
Time Processed : 11:31:54  
Injection Volume : 0.2  
Sample Name : HA Peptide  
Cat. No. : RP11735  
Lot. No. : PE7101710  
Theoretical MW : 1102.15  
Observed MW : 1101.50

Interface : ESI  
Nebulizing Gas Flow : 1.5L/min  
CDL Temp : 250°C  
Block Temp : 200°C

Interface Bias : +4.5 kV  
Drying Gas Flow : 5 L/min  
T.Flow : 0.2 ml/min  
B.conc : 50%H2O/50%MeOH