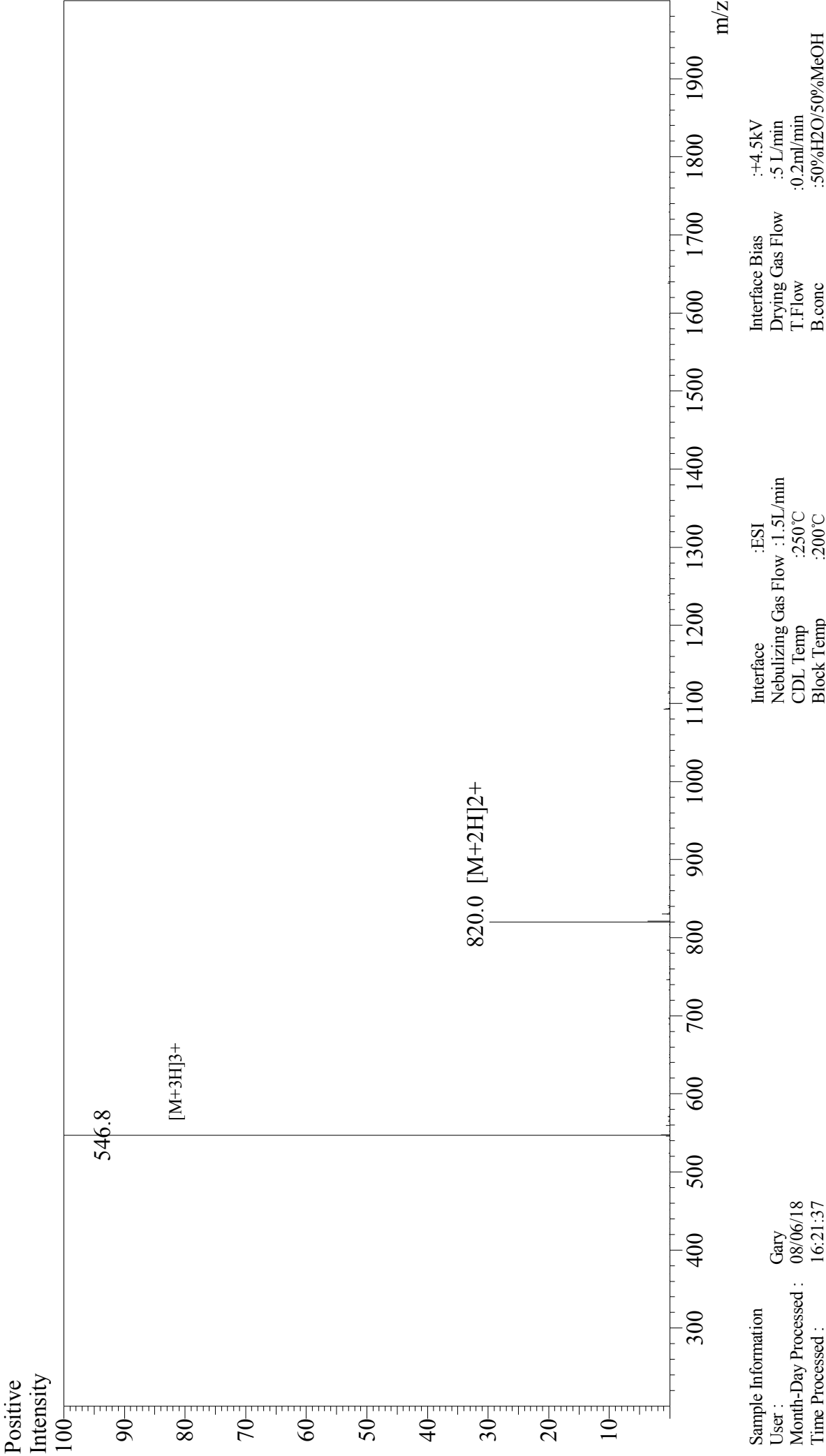


Mass Spectrum



Sample Information

User :	Gary	Interface	:ESI	Interface Bias	:+4.5kV
Month-Day Processed :	08/06/18	Nebulizing Gas Flow	:1.5L/min	Drying Gas Flow	:5 L/min
Time Processed :	16:21:37	CDL Temp	:250°C	T.Flow	:0.2ml/min
Injection Volume :	0.2	Block Temp	:200°C	B.conc	:50%H2O/50%MeOH
Sample Name :	Somatostatin				
Cat No. :	RP10226				
Lot No. :	PE3081807				
Theoretical MW :	1637.88				
Observed MW :	1637.4				