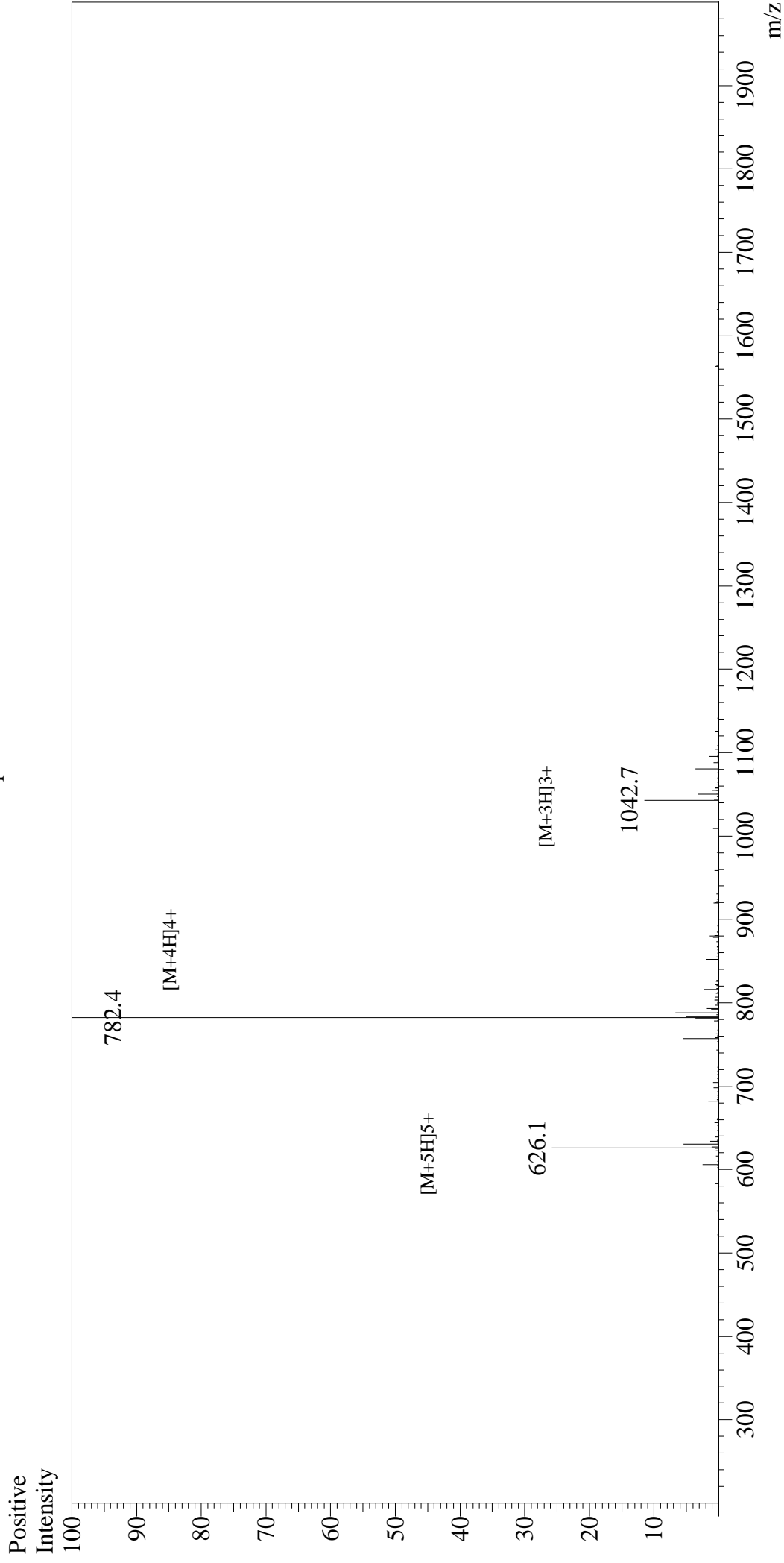


Mass Spectrum



Sample Information

User : Gary
Month-Day Processed : 11/13/18
Time Processed : 20:52:53
Injection Volume : 0.2
Sample Name : Calcitonin Gene Related Peptide (CGRP) (8-37), human
Cat No. : RPI1089
Lot No. : PE4261811
Theoretical MW : 3125.59
Observed MW : 3125.6

Interface : ESI
Nebulizing Gas Flow : 1.5L/min
CDL Temp : 250°C
Block Temp : 200°C

Equipment : GK11010007
Interface Bias : +4.5kV
Drying Gas Flow : 5 L/min
T.Flow : 0.2ml/min
B.conc : 50%H2O/50%MeOH