

Sample Name : GP(33-41)  
 Cat. No. : RP20091  
 Lot. No. : PE4831611

Pump A : 0.065% trifluoroacetic in 100% water (v/v)  
 Pump B : 0.05% trifluoroacetic in 100% acetonitrile (v/v)  
 Total Flow:1 ml/min  
 Wavelength:220 nm

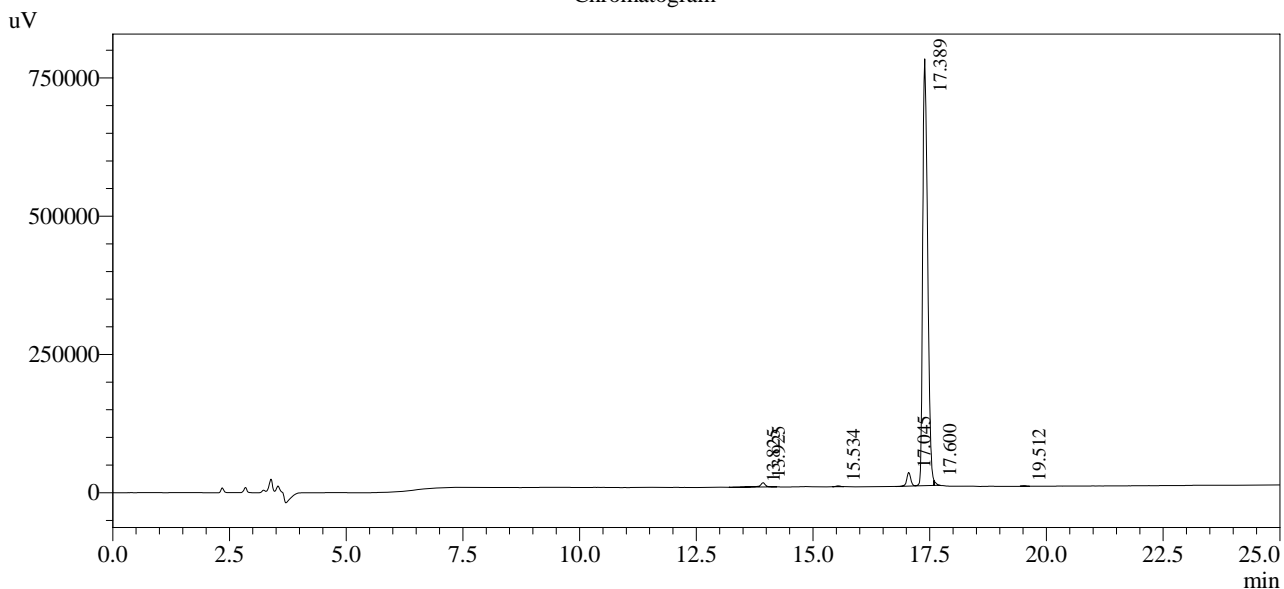
Time	Unit	Command	Value	Comment
0.01	Pumps	Pump B Conc.	5	
25.00	Pumps	Pump B Conc.	65	
25.01	Pumps	Pump B Conc.	95	
31.00	Pumps	Pump B Conc.	95	
31.01	Pumps	Pump B Conc.	5	
40.00	Pumps	Pump B Conc.	5	
40.01	Controller	Stop		

<<Column Performance>>

<Detector A>

Column : Alltima™ C18 4.6 x 250 mm

Chromatogram



1 Det.A Ch1 / 220nm

Peak Table

Detector A Ch1 220nm

Peak#	Ret. Time	Area	Height	Area %
1	13.825	18282	1305	0.307
2	13.925	53393	7753	0.898
3	15.534	9055	1505	0.152
4	17.045	149595	24865	2.515
5	17.389	5692291	771892	95.714
6	17.600	20558	7517	0.346
7	19.512	3989	676	0.067
Total		5947162	815513	100.000