

Sample Name : hgp100(25-33)  
 Cat. No. : RP20344  
 Lot. No. : PE1871610

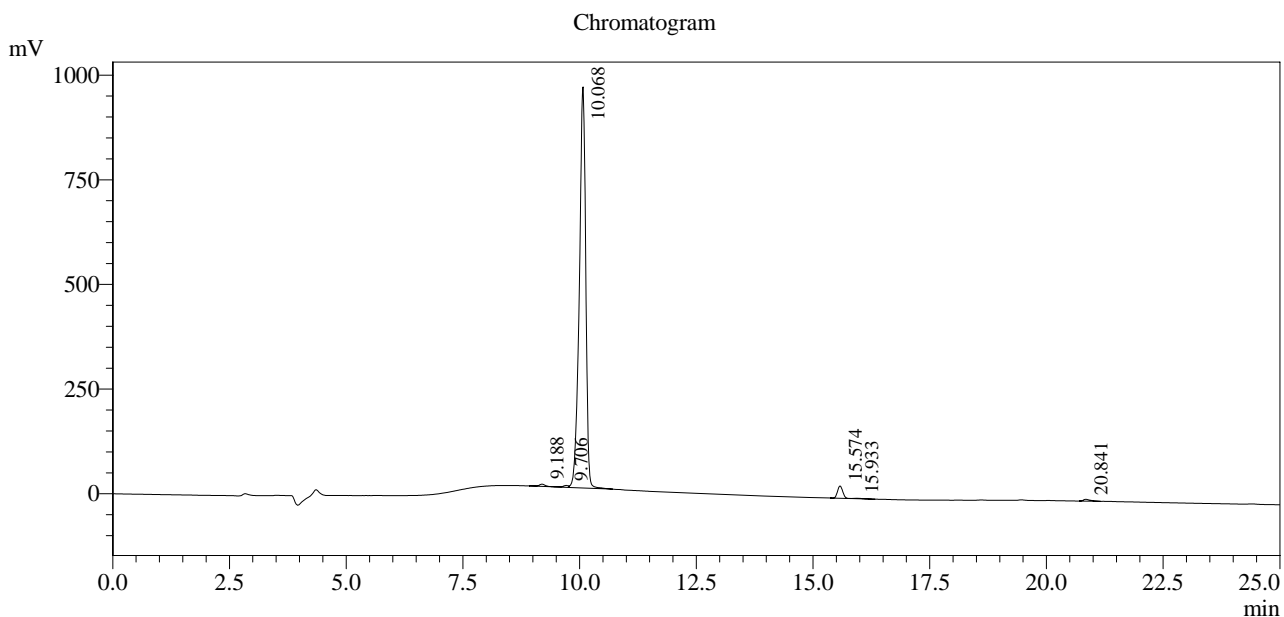
Pump A : 0.065% trifluoroacetic in 100% water (v/v)  
 Pump B : 0.05% trifluoroacetic in 100% acetonitrile (v/v)  
 Total Flow:1 ml/min  
 Wavelength:220 nm

| Time  | Unit       | Command       | Value | Comment |
|-------|------------|---------------|-------|---------|
| 0.01  | Pumps      | Pump A B.Conc | 5     |         |
| 25.00 | Pumps      | Pump A B.Conc | 65    |         |
| 25.01 | Pumps      | Pump A B.Conc | 95    |         |
| 31.00 | Pumps      | Pump A B.Conc | 95    |         |
| 31.01 | Pumps      | Pump A B.Conc | 5     |         |
| 40.00 | Pumps      | Pump A B.Conc | 5     |         |
| 40.10 | Controller | Stop          |       |         |

<<Column Performance>>

<Detector A>

Column : Alltima™ C18 4.6 x 250 mm



I Det.A Ch1 / 220nm

Peak Table

Detector A Ch1 220nm

| Peak# | Ret. Time | Area    | Height  | Area %  |
|-------|-----------|---------|---------|---------|
| 1     | 9.188     | 56449   | 5571    | 0.591   |
| 2     | 9.706     | 36965   | 4560    | 0.387   |
| 3     | 10.068    | 9176495 | 958251  | 96.084  |
| 4     | 15.574    | 226758  | 29369   | 2.374   |
| 5     | 15.933    | 11018   | 963     | 0.115   |
| 6     | 20.841    | 42842   | 4194    | 0.449   |
| Total |           | 9550527 | 1002908 | 100.000 |