

Sample Name: Physalaemin
 Cat No. : RP10474
 Lot No. : E4800119I
 Time Processed: 4:14:44 AM
 Month-Day-Year Processed :09/26/2019

Pump A : 0.065% trifluoroacetic in 100% water (v/v)
 Pump B : 0.05% trifluoroacetic in 100% acetonitrile (v/v)
 Total Flow: 1 ml/min
 Wavelength: 220 nm
 <<LC Time Program>>

Time	Module	Command	Value
0.01	Pumps	Solvent B Conc.	5
25.00	Pumps	Solvent B Conc.	65
25.01	Pumps	Solvent B Conc.	95
27.00	Pumps	Solvent B Conc.	95
27.01	Pumps	Solvent B Conc.	5
33.00	Pumps	Solvent B Conc.	5
33.00	Controller	Stop	

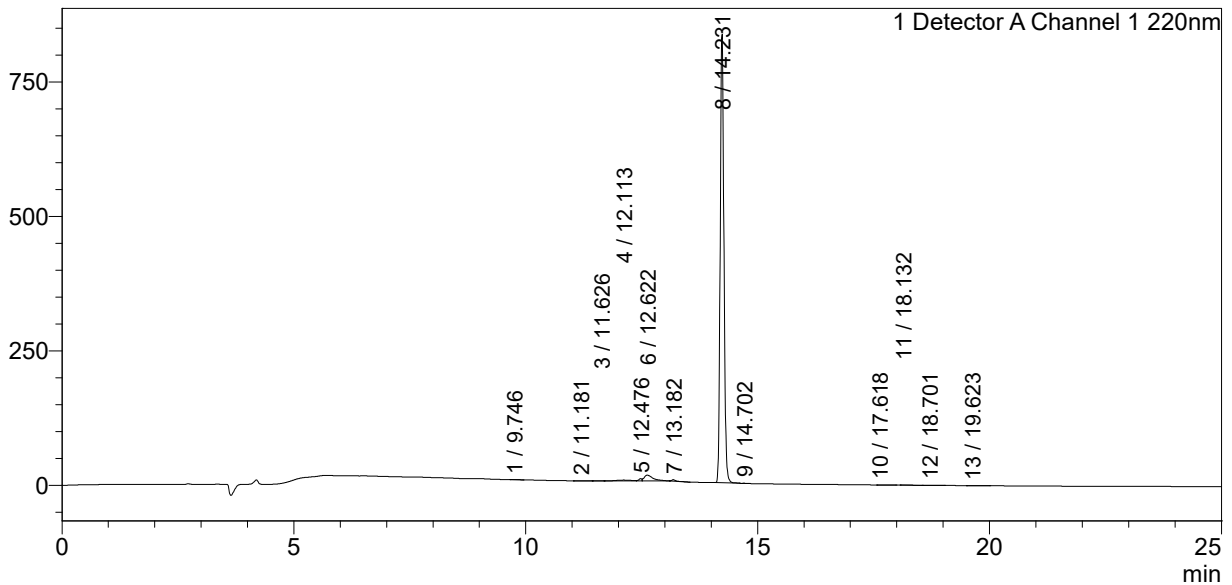
<<Column Performance>>

<Detector A>

Column : Alltima™ C18 4.6 x 250 mm
 Equipment: ZJ19010325

<Chromatogram>

mV



<Peak Table>

Detector A Channel 1 220nm

Peak#	Ret. Time	Area	Height	Area%
1	9.746	1472	133	0.030
2	11.181	3234	258	0.066
3	11.626	2212	221	0.045
4	12.113	36426	1607	0.746
5	12.476	19837	4159	0.406
6	12.622	144440	10797	2.956
7	13.182	16443	2682	0.337
8	14.231	4652978	834528	95.230
9	14.702	1039	201	0.021
10	17.618	1881	64	0.038
11	18.132	1868	64	0.038
12	18.701	2200	163	0.045
13	19.623	1988	138	0.041
Total		4886018	855014	100.000