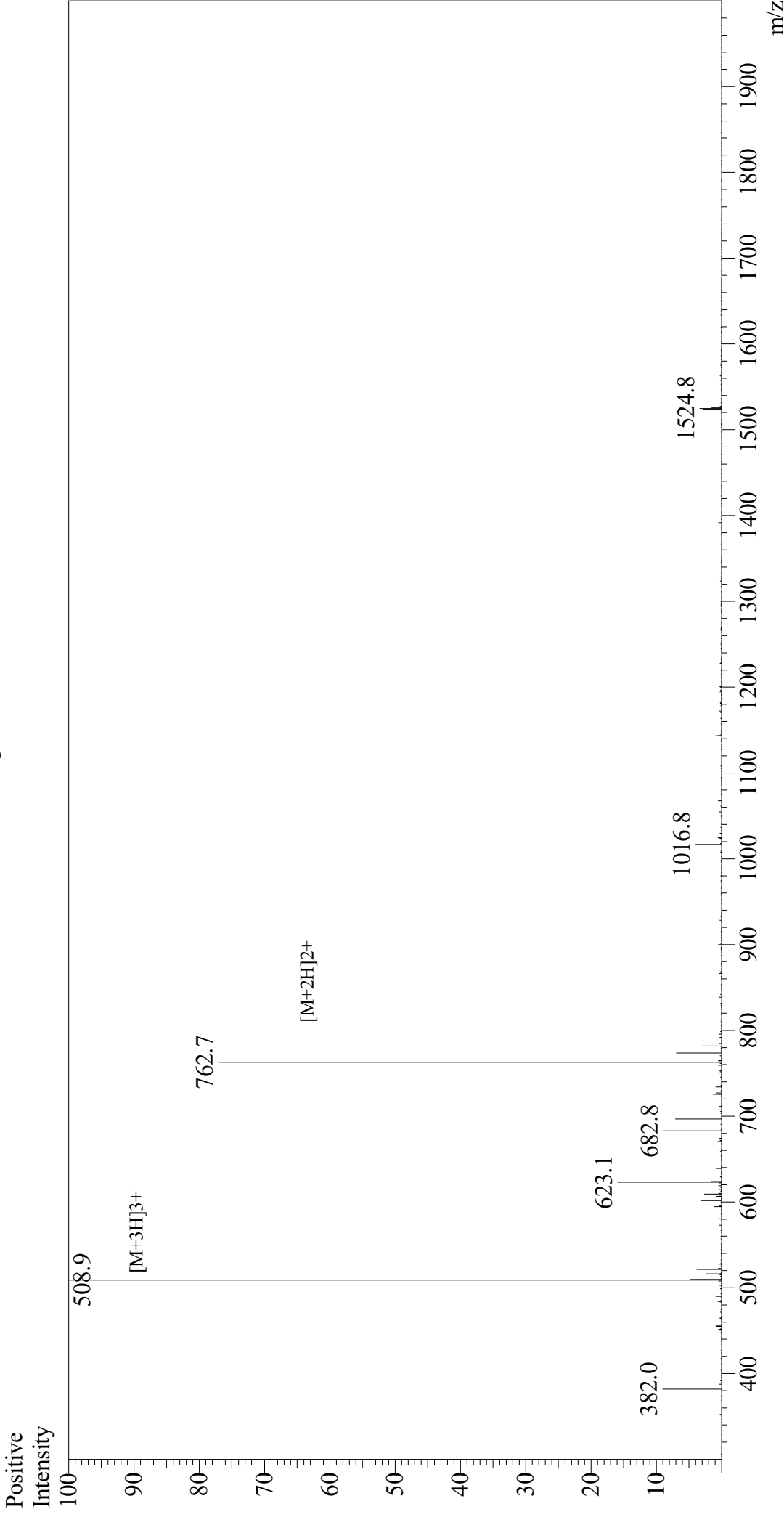


Mass Spectrum



Sample Information

Acquired by: Gary
 Month-Day Processed: 07/08/20
 Time Processed: 09:22:45 PM
 Injection Volume: 0.3
 Sample Name: Osteogenic Growth Peptide, OGP
 Cat. No.: RP20311
 Lot. No.: E7160720G
 Theoretical MW: 1523.76
 Observed MW: 1523.7

Interface

Interface: ESI
 Nebulizing Gas Flow: 1.5L/min
 CDL Temp: 250
 Block Temp: 200

Equipment

Equipment: GK11010007
 Interface Bias: +4.5 kV
 Drying Gas Flow: 5 L/min
 T.Flow: 0.2 ml/min
 B.conc: 50% H2O/50% MeOH