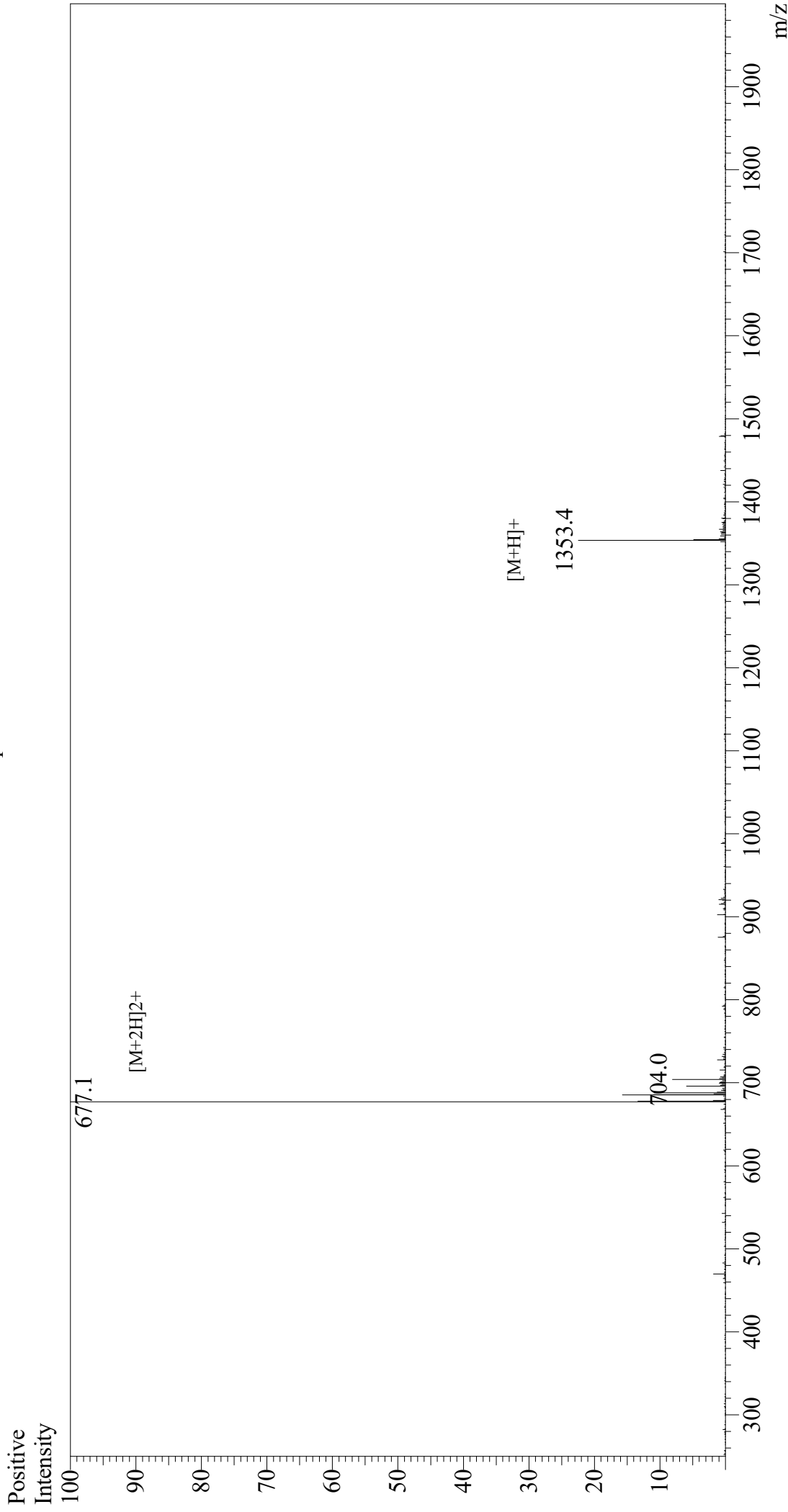


# Mass Spectrum



## Sample Information

Month-Day/Processed : 07/22/21  
Time Processed : 10:39:21 AM  
Injection Volume : 0.4  
Sample Name : Glucagon (19-29), human  
Cat No. : RPI0770  
Lot No. : E1394421G  
Theoretical MW : 1352.52  
Observed MW : 1352.2

Interface : ESI  
Nebulizing Gas Flow : 1.5L/min  
CDL Temp : 250  
Block Temp : 200

Equipment : GK11010007  
Interface Bias : +3.5 kV  
Drying Gas Flow : 5 L/min  
T.Flow : 0.2 ml/min  
B.conc : 50% $H_2O$ /50% $MeOH$