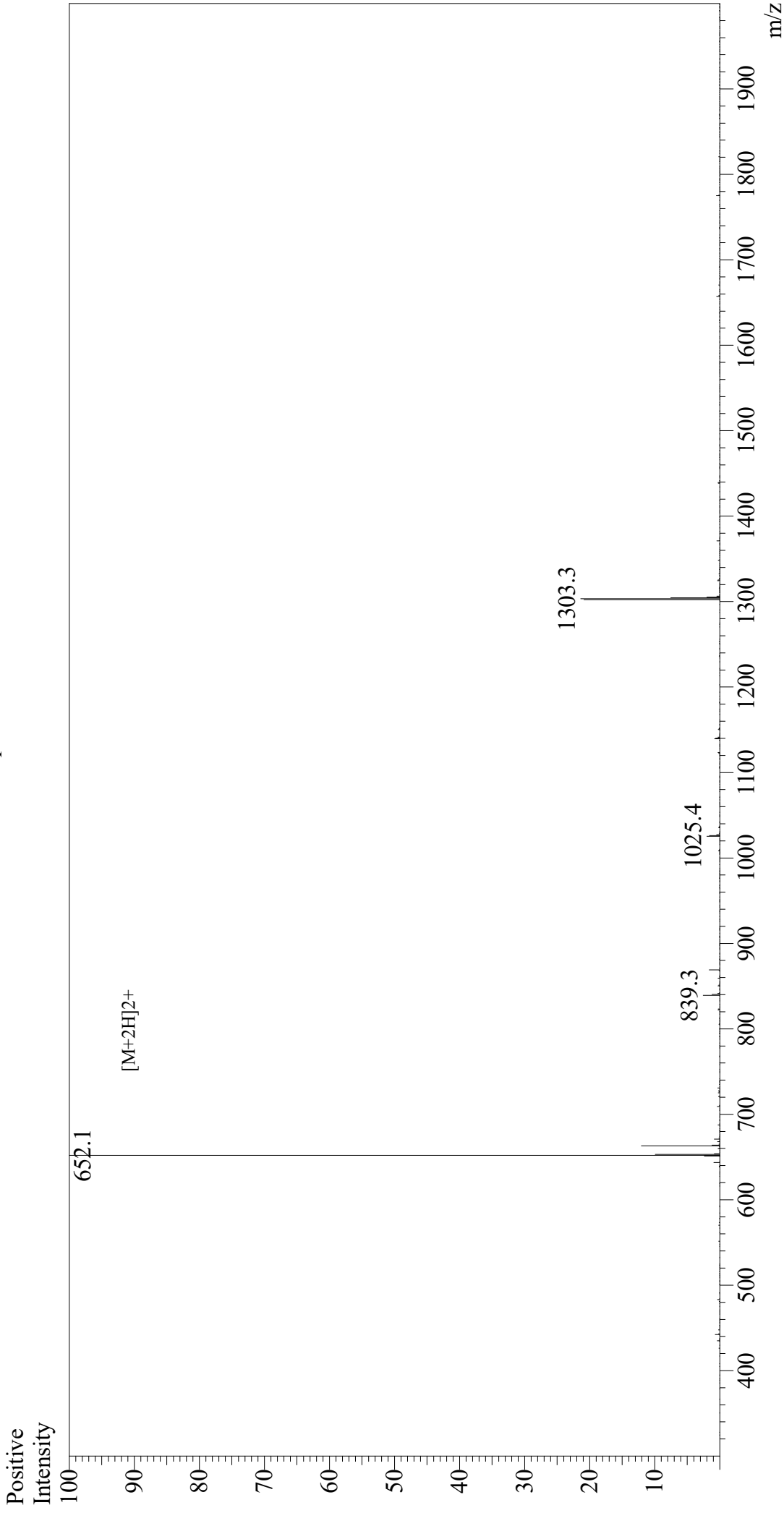


Mass Spectrum



Sample Information
Month-Day Processed : 12/22/20
Time Processed : 10:29:35 PM
Injection Volume : 0.4
Sample Name : Kisspeptin-10
Cat NO : RP20494
Lot NO : E6306920L
Theoretical MW : 1302.50
Observed MW : 1302.2

Interface : ESI
Nebulizing Gas Flow : 1.5L/min
CDL Temp : 250
Block Temp : 200

Equipment : GK11010007
Interface Bias : +4.5 kV
Drying Gas Flow : 5 L/min
T.Flow : 0.2 ml/min
B.conc : 50% H_2O /50% MeOH