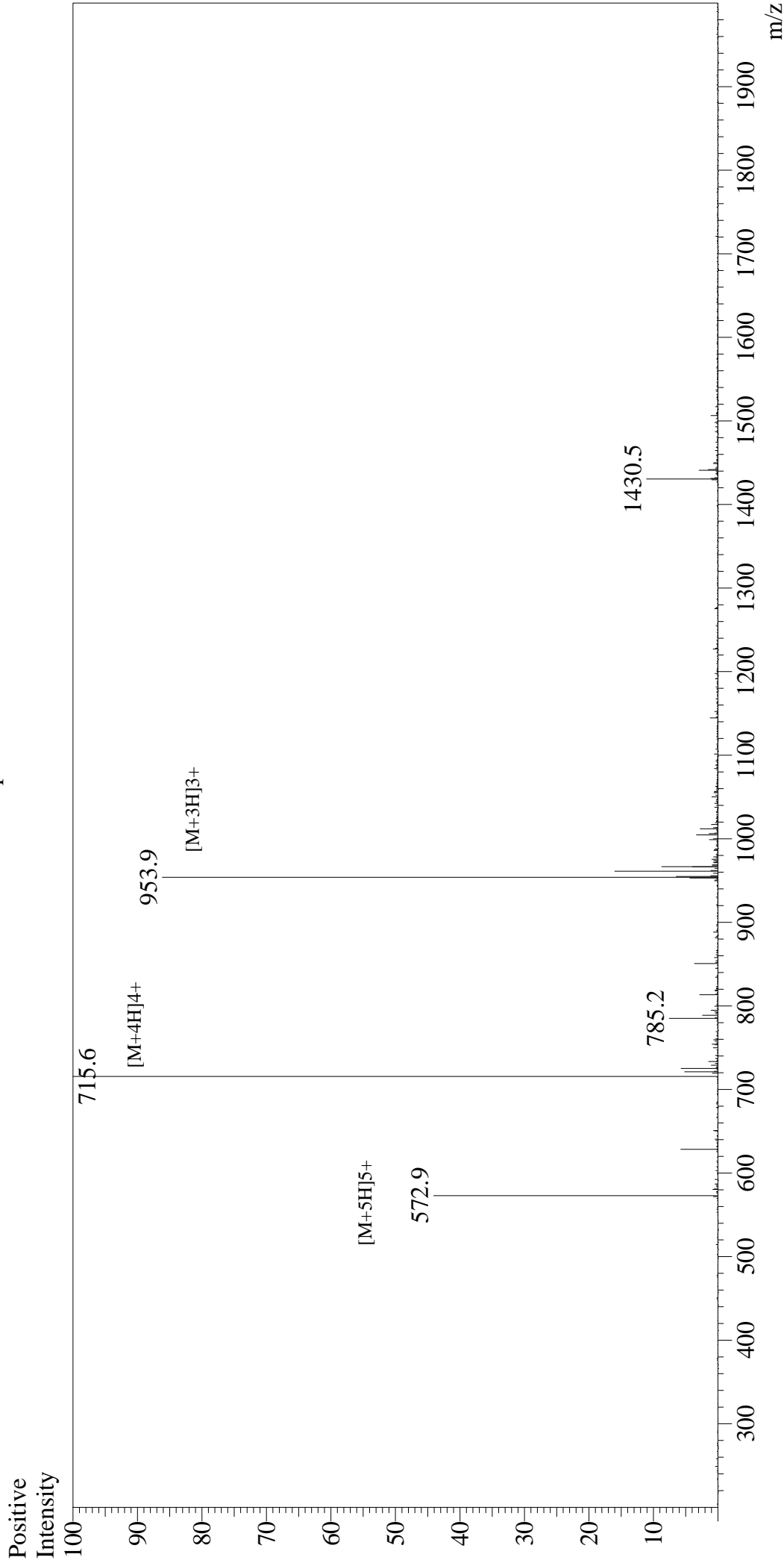


Mass Spectrum



Sample Information

Month-Day Processed : 09/13/20
Time Processed : 21:51:00
Injection Volume : 0.3
Sample Name : Gastrin-Releasing Peptide, human
Cat No. : RP10791
Lot No. : E3875201
Theoretical MW : 2859.30
Observed MW : 2858.4

Interface

Interface : ESI
Nebulizing Gas Flow : 1.5L/min
CDL Temp : 250
Block Temp : 200

Equipment

Equipment : GK11010007
Interface Bias : +4.5kV
Drying Gas Flow : 5 L/min
T.Flow : 0.2ml/min
B.conc : 50%H2O/50%MeOH