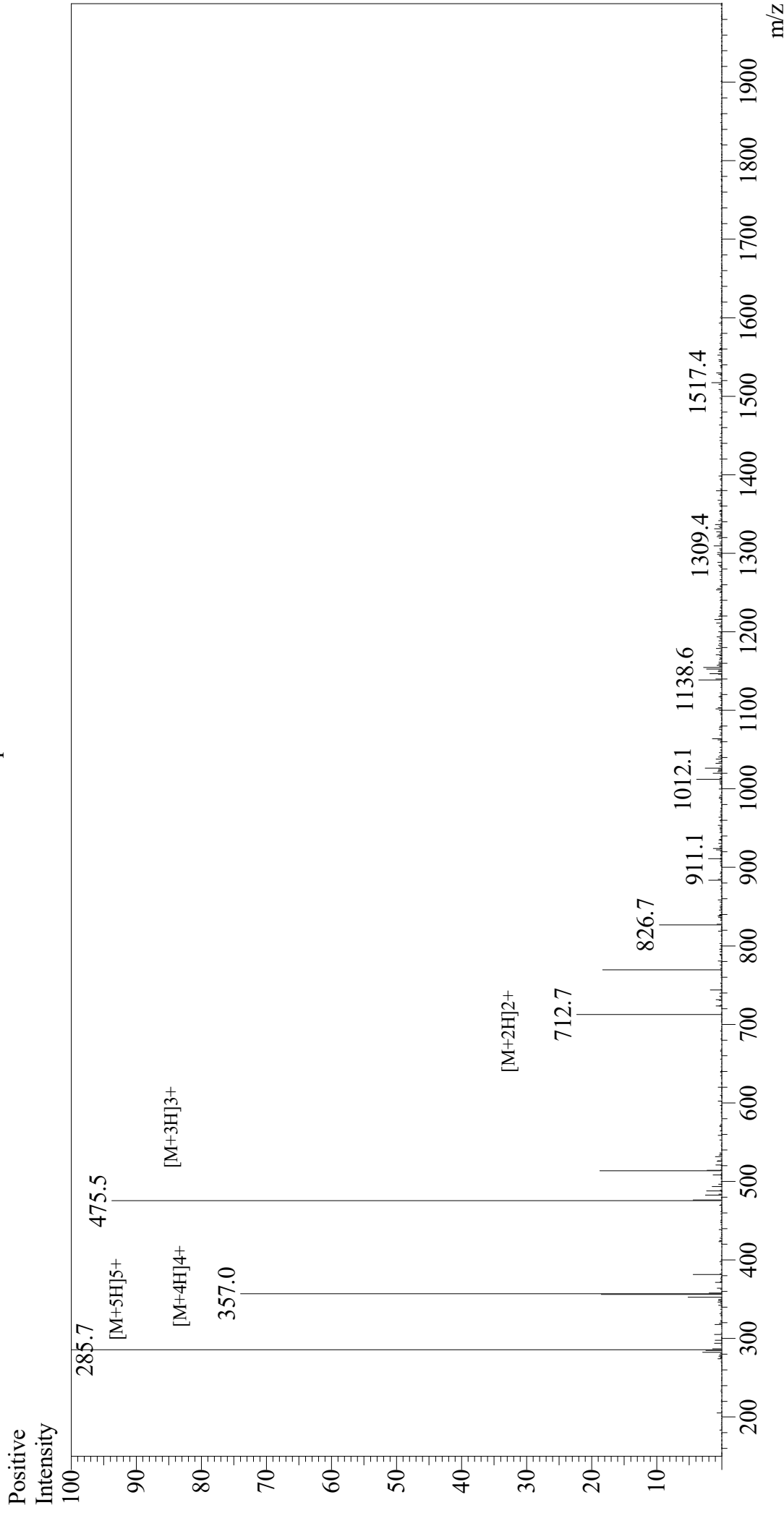


# Mass Spectrum



Sample Information  
Month-Day Processed : 06/25/21  
Time Processed : 3:29:11 PM  
Injection Volume : 0.4  
Sample Name : (Arg)9  
Cat No. : RP20403  
Lot No. : E8669621F  
Theoretical MW : 1423.70  
Observed MW : 1423.5

Interface : ESI  
Nebulizing Gas Flow : 1.5L/min  
CDL Temp : 250  
Block Temp : 200

Equipment : GK11010007  
Interface Bias : +4.5 kV  
Drying Gas Flow : 5 L/min  
T.Flow : 0.2 ml/min  
B.conc : 50% H<sub>2</sub>O/50% MeOH