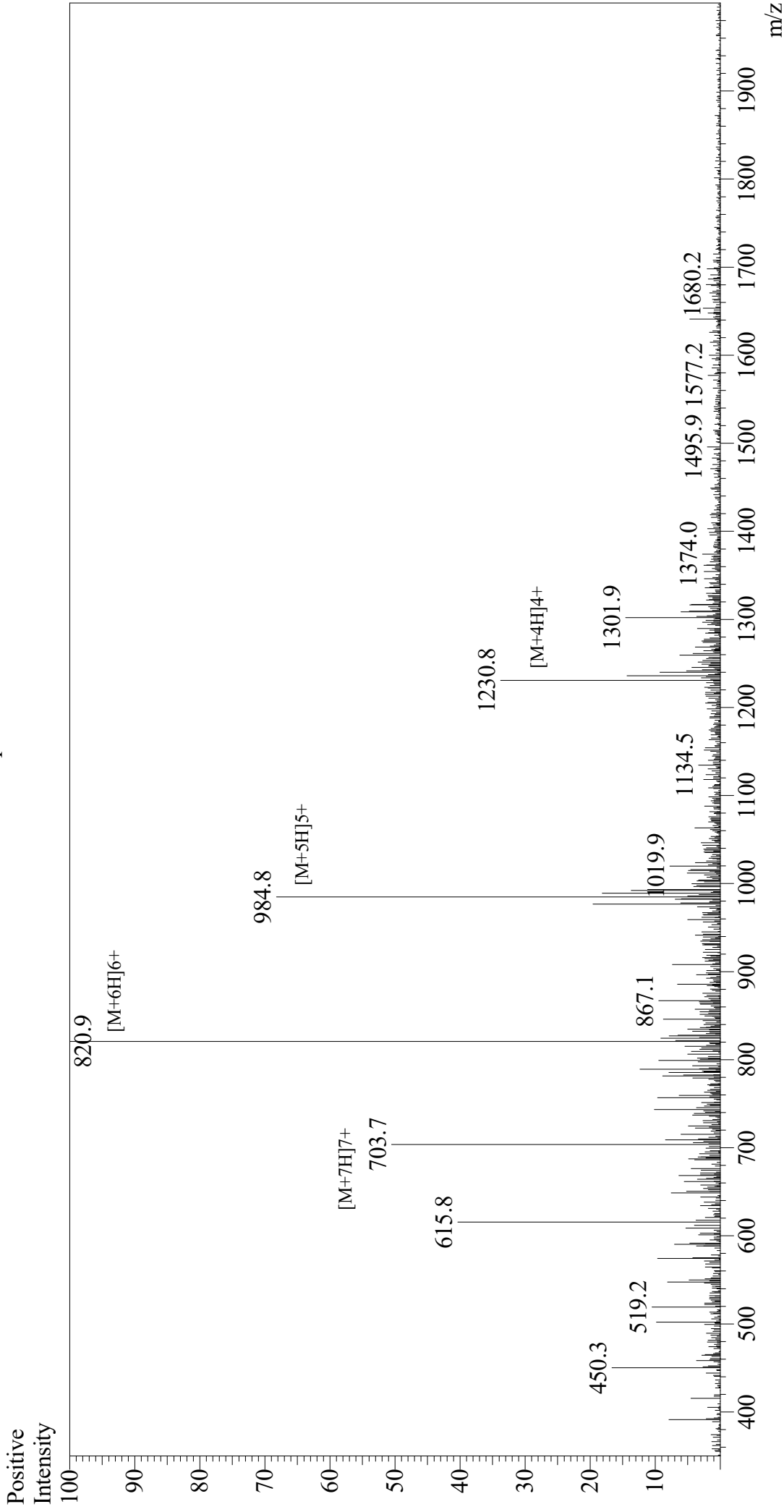


Mass Spectrum



Sample Information	Interface	: ESI	Equipment	: GK11010007
Month-Day Processed :	Nebulizing Gas Flow	: 1.5L/min	Interface Bias	: +4.5 kV
Time Processed :	CDL Temp	: 250	Drying Gas Flow	: 5 L/min
Injection Volume :	Block Temp	: 200	T.Flow	: 0.2 ml/min
Sample Name :			B.conc	: 50% H ₂ O/50% MeOH
Cat. No. :				
Lot. No. :				
Theoretical MW :				
Observed MW :				