

Sample Name :PACAP (6-38), human, ovine, rat  
 Cat No. :RP10338  
 Lot No. :E6790119J  
 Time Processed :10:27:28 AM  
 Month-Day-Year Processed :10/16/19

Pump A : 0.065% trifluoroacetic in 100% water (v/v)  
 Pump B : 0.05% trifluoroacetic in 100% acetonitrile (v/v)  
 Total Flow:1 ml/min  
 Wavelength:220 nm

<<LC Time Program>>

Time	Module	Command	Value
0.01	Pumps	Solvent B Conc.	5
25.00	Pumps	Solvent B Conc.	65
30.01	Pumps	Solvent B Conc.	95
31.00	Pumps	Solvent B Conc.	95
31.01	Pumps	Solvent B Conc.	5
40.00	Pumps	Solvent B Conc.	5
40.01	Controller	Stop	

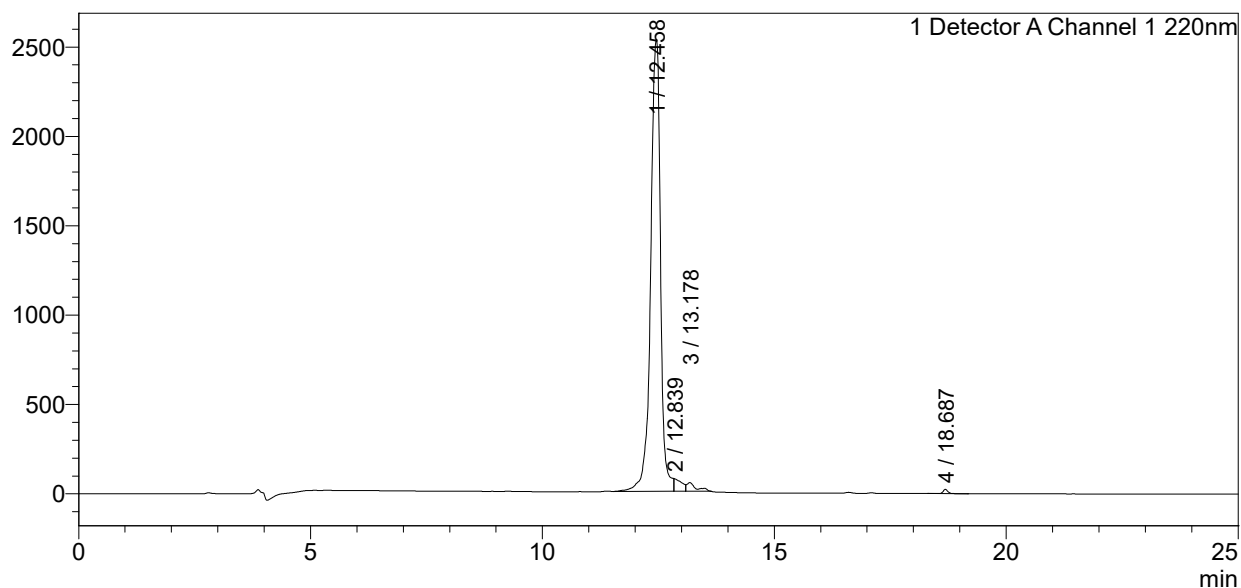
<<Column Performance>>

<Detector A>

Column : Inertsil ODS-3 4.6 x 250 mm  
 Equipment: ZJ17010508

<Chromatogram>

mV



<Peak Table>

Detector A Channel 1 220nm

Peak#	Ret. Time	Area	Height	Area%
1	12.458	37193645	2531015	95.627
2	12.839	830294	71601	2.135
3	13.178	699942	49303	1.800
4	18.687	170649	23999	0.439
Total		38894529	2675918	100.000