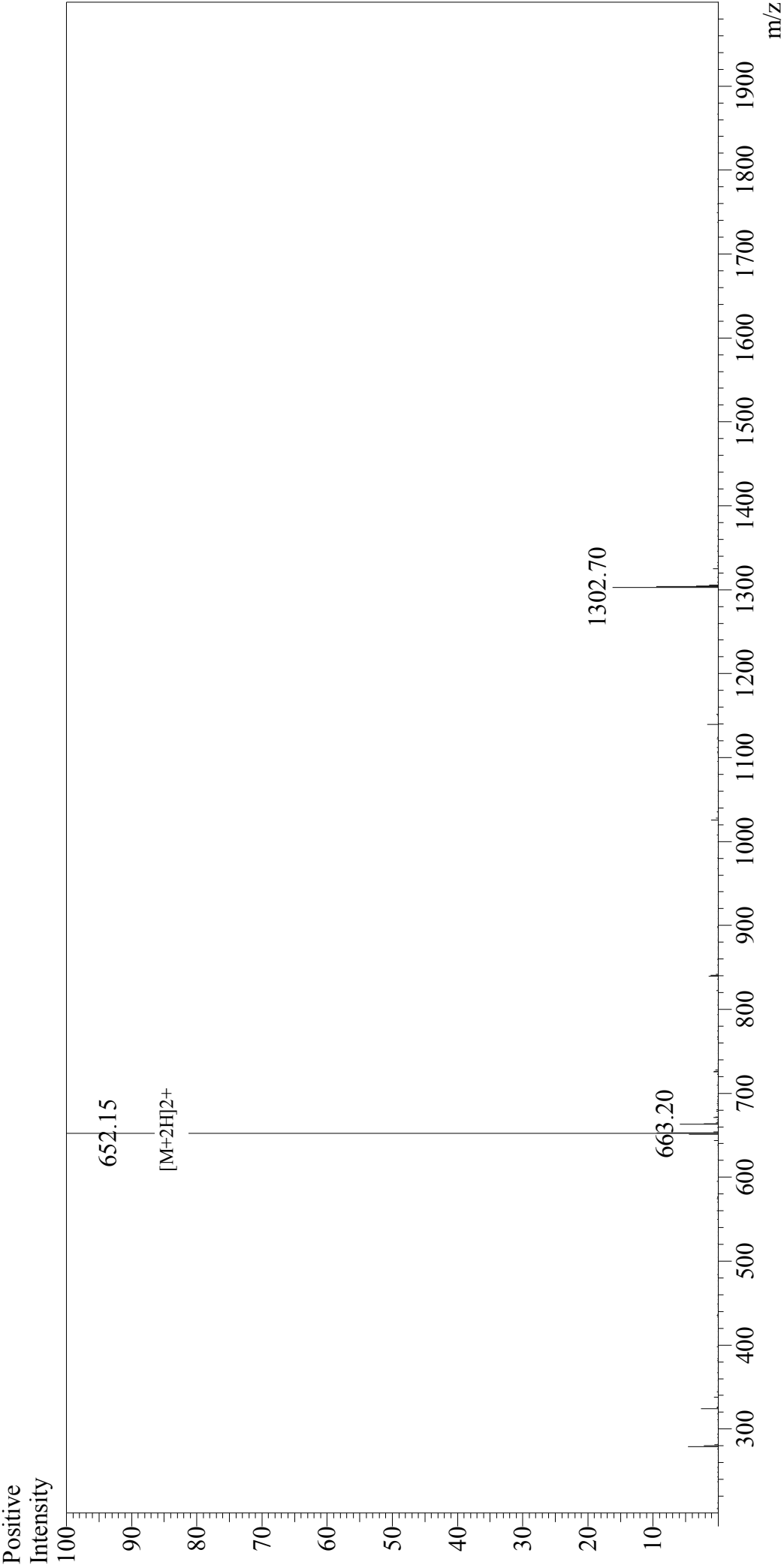


Mass Spectrum



Sample Information		Interface		Interface Bias	
User :	Gary	Nebulizing Gas Flow :	1.5L/min	Drying Gas Flow	:+4.5kV
Month-Day Processed :	06/29/17	CDL Temp :	250°C	T.Flow	:5 L/min
Time Processed :	10:41:31	Block Temp :	200°C	B.conc	:0.2ml/min
Injection Volume :	0.2				:50%H2O/50%MeOH

Sample Name :	Kisspeptin-10
Cat No. :	RP20494
Lot No. :	PE9181706
Theoretical MW :	1302.50
Observed MW :	1302.30