

Sample Name : Kisspeptin-10
 Cat. No. : RP20494
 Lot. No. : PE9181706

Pump A : 0.065% trifluoroacetic in 100% water (v/v)
 Pump B : 0.05% trifluoroacetic in 100% acetonitrile (v/v)
 Total Flow:1 ml/min
 Wavelength:220 nm

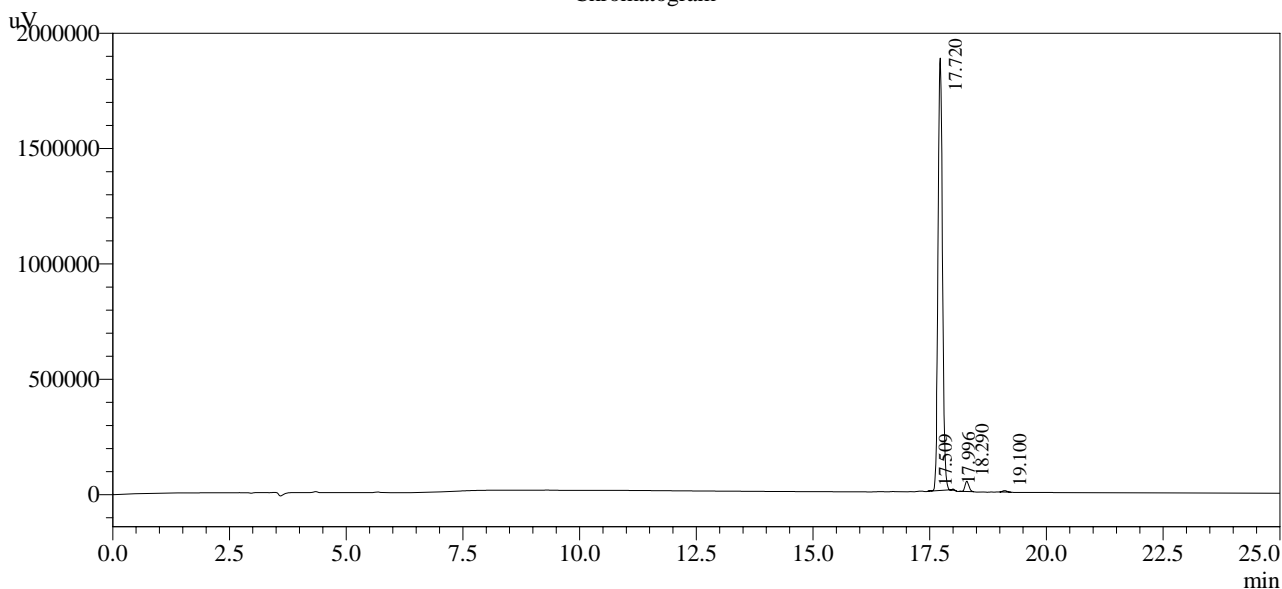
| Time | Unit | Command | Value | Comment |
|-------|------------|---------------|-------|---------|
| 0.01 | Pumps | Pump A B.Conc | 5 | |
| 25.00 | Pumps | Pump A B.Conc | 65 | |
| 25.01 | Pumps | Pump A B.Conc | 95 | |
| 31.00 | Pumps | Pump A B.Conc | 95 | |
| 31.01 | Pumps | Pump A B.Conc | 5 | |
| 40.00 | Pumps | Pump A B.Conc | 5 | |
| 40.01 | Controller | Stop | | |

<<Column Performance>>

<Detector A>

Column : Alltima™ C18 4.6 x 250 mm

Chromatogram



1 Det.A Ch1 / 220nm

Peak Table

Detector A Ch1 220nm

| Peak# | Ret. Time | Area | Height | Area % |
|-------|-----------|----------|---------|---------|
| 1 | 17.509 | 7100 | 1951 | 0.056 |
| 2 | 17.720 | 12455505 | 1874242 | 97.513 |
| 3 | 17.996 | 14225 | 4301 | 0.111 |
| 4 | 18.290 | 253325 | 44381 | 1.983 |
| 5 | 19.100 | 43077 | 6266 | 0.337 |
| Total | | 12773233 | 1931141 | 100.000 |