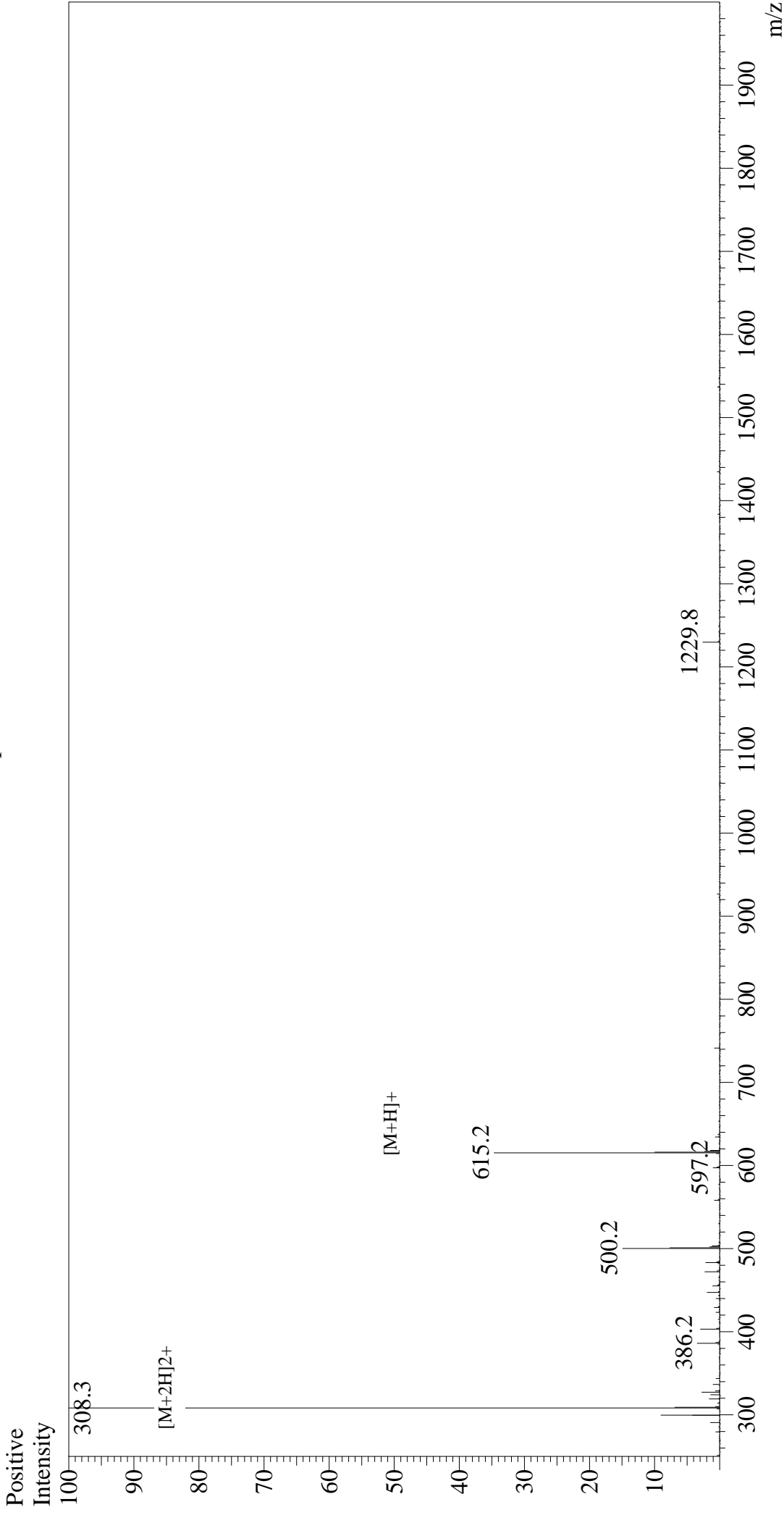


Mass Spectrum



Sample Information

Acquired by : Gary
Month-Day Processed : 03/18/19
Time Processed : 19:52:21
Injection Volume : 0.2
Sample Name : Gly-Arg-Gly-Asp-Asn-Pro
Cat No. : RP10847
Lot No. : PE9291903
Theoretical MW : 614.60
Observed MW : 614.6

Interface : ESI

Nebulizing Gas Flow : 1.5L/min
CDL Temp : 250
Block Temp : 200

Equipment

Interface Bias : +4.5 kV
Drying Gas Flow : 5 L/min
T.Flow : 0.2 ml/min
B.conc : 50% H₂O/50% MeOH

: GK11010007