

Sample Name :Glucagon-Like Peptide (GLP) I (7-36), amide, human
 Cat. No. : RP10773
 Lot. No. : PE7941902
 Time Processed : 10:48:16
 Month-Day-Year Processed : 03/07/2019

Pump A : 0.065% trifluoroacetic in 100% water (v/v)
 Pump B : 0.05% trifluoroacetic in 100% acetonitrile (v/v)
 Total Flow:1 ml/min
 Wavelength:220 nm

Time	Unit	Command	Value	Comment
0.01	Pumps	Pump A B.Conc	15	
25.00	Pumps	Pump A B.Conc	75	
25.01	Pumps	Pump A B.Conc	95	
30.00	Pumps	Pump A B.Conc	95	
30.01	Pumps	Pump A B.Conc	15	
40.00	Pumps	Pump A B.Conc	15	
40.01	Controller	Stop		

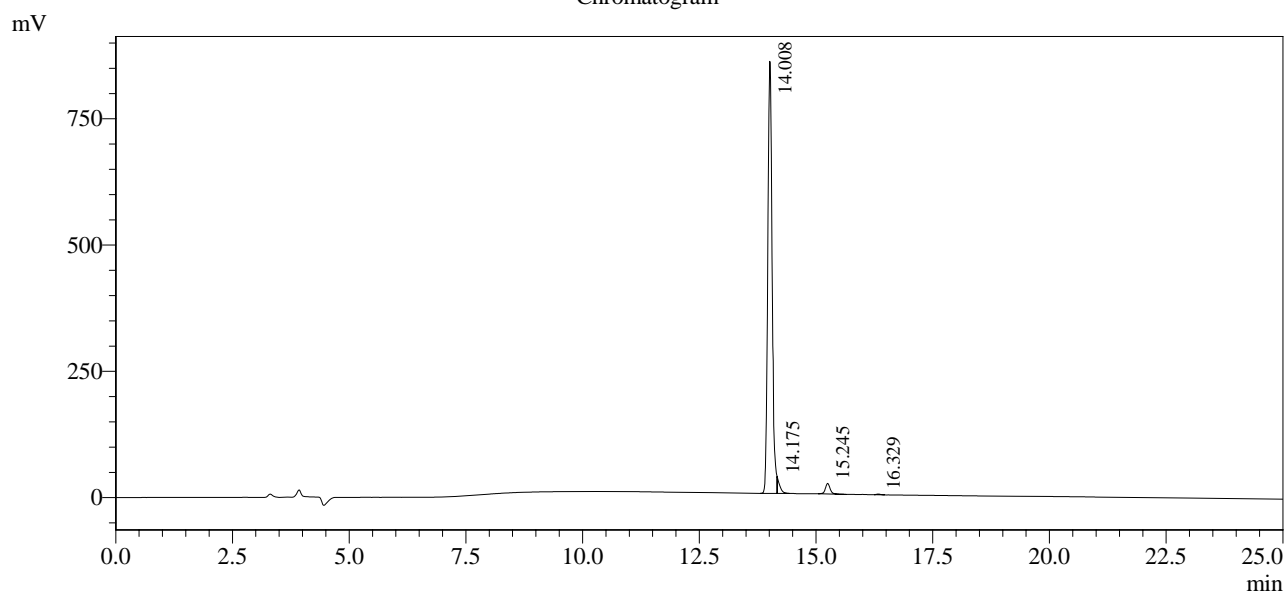
<<Column Performance>>

<Detector A>

Column : Inertsil ODS-3 4.6 x 250 mm

Equipment: G09010878

Chromatogram



1 Det.A Ch1 / 220nm

Peak Table

Detector A Ch1 220nm

Peak#	Ret. Time	Area	Height	Area %
1	14.008	5555692	855501	95.399
2	14.175	114363	30251	1.964
3	15.245	145371	20844	2.496
4	16.329	8182	1502	0.140
Total		5823609	908098	100.000