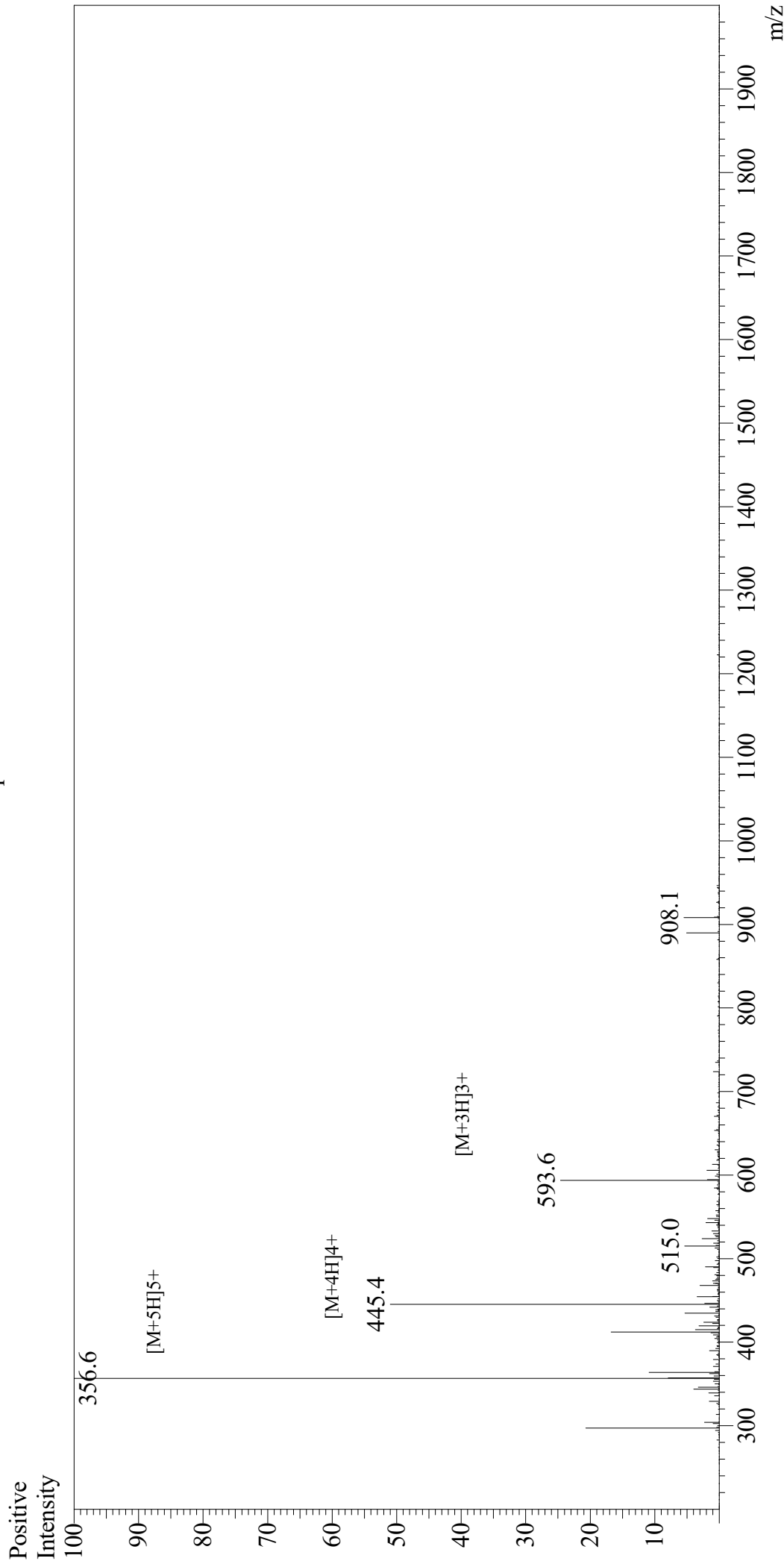


# Mass Spectrum



Equipment : GK11010007  
Interface Bias : +4.5kV  
Drying Gas Flow : 5 L/min  
T.Flow : 0.2ml/min  
B.conc : 50%H2O/50%MeOH

Interface : ESI  
Nebulizing Gas Flow : 1.5L/min  
CDL Temp : 250  
Block Temp : 200

Sample Information  
Month-Day Processed : 09/24/20  
Time Processed : 03:15:29 PM  
Injection Volume : 0.4  
Sample Name : SAMS Peptide  
Cat No. : RP20457  
Lot No. : E5188820I  
Theoretical MW : 1778.20  
Observed MW : 1778.0