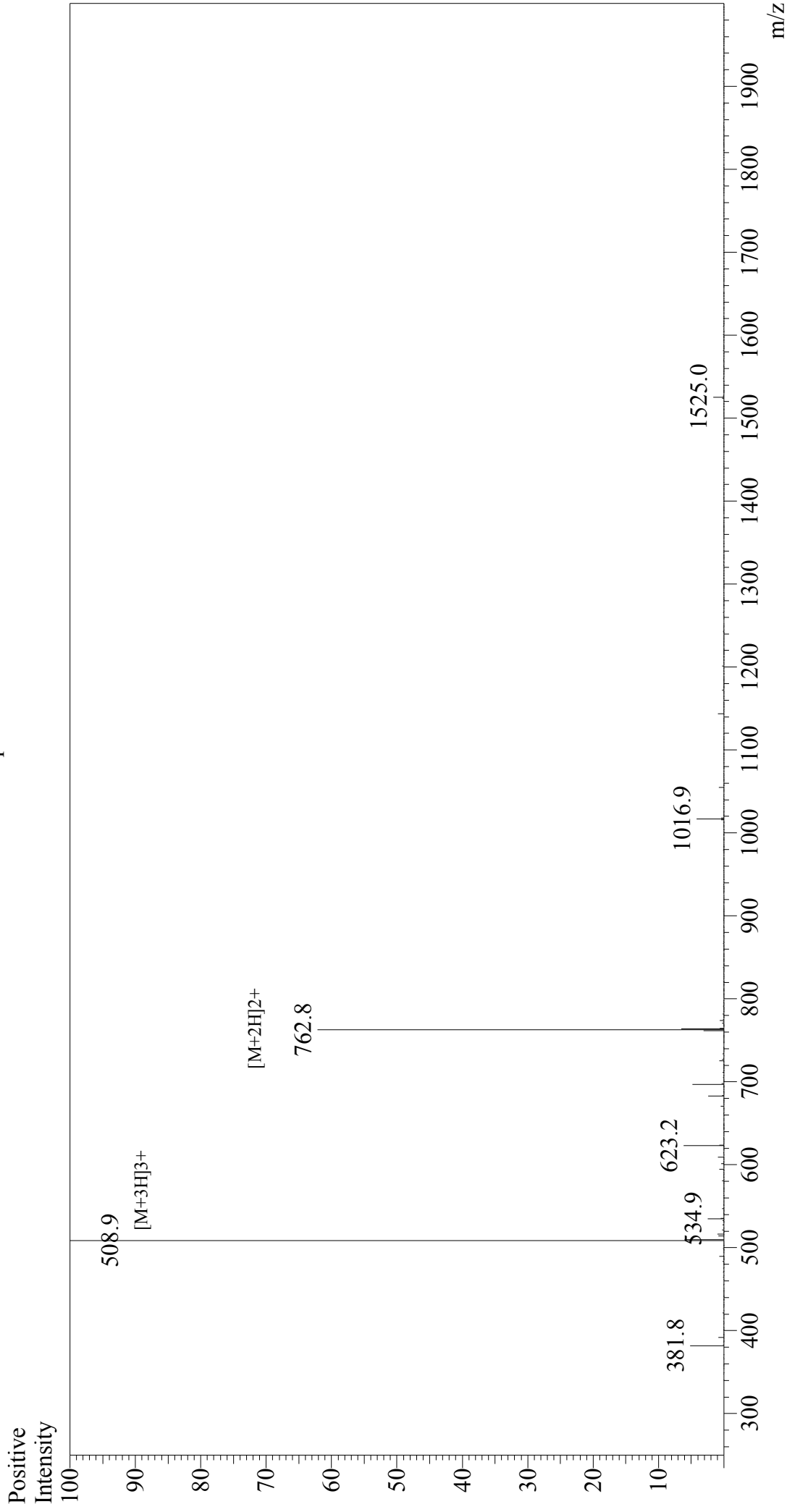


# Mass Spectrum



## Sample Information

Acquired by : Gary  
Month-Day Processed : 08/11/18  
Time Processed : 19:25:01  
Injection Volume : 0.2  
Sample Name : Osteogenic Growth Peptide, OGP  
Cat. No. : RP20311  
Lot. No. : PE6221808  
Theoretical MW : 1523.76  
Observed MW : 1523.7

Interface : ESI  
Nebulizing Gas Flow : 1.5L/min  
CDL Temp : 250°C  
Block Temp : 200°C

Interface Bias : +4.5 kV  
Drying Gas Flow : 5 L/min  
T.Flow : 0.2 ml/min  
B.conc : 50% H<sub>2</sub>O/50% MeOH