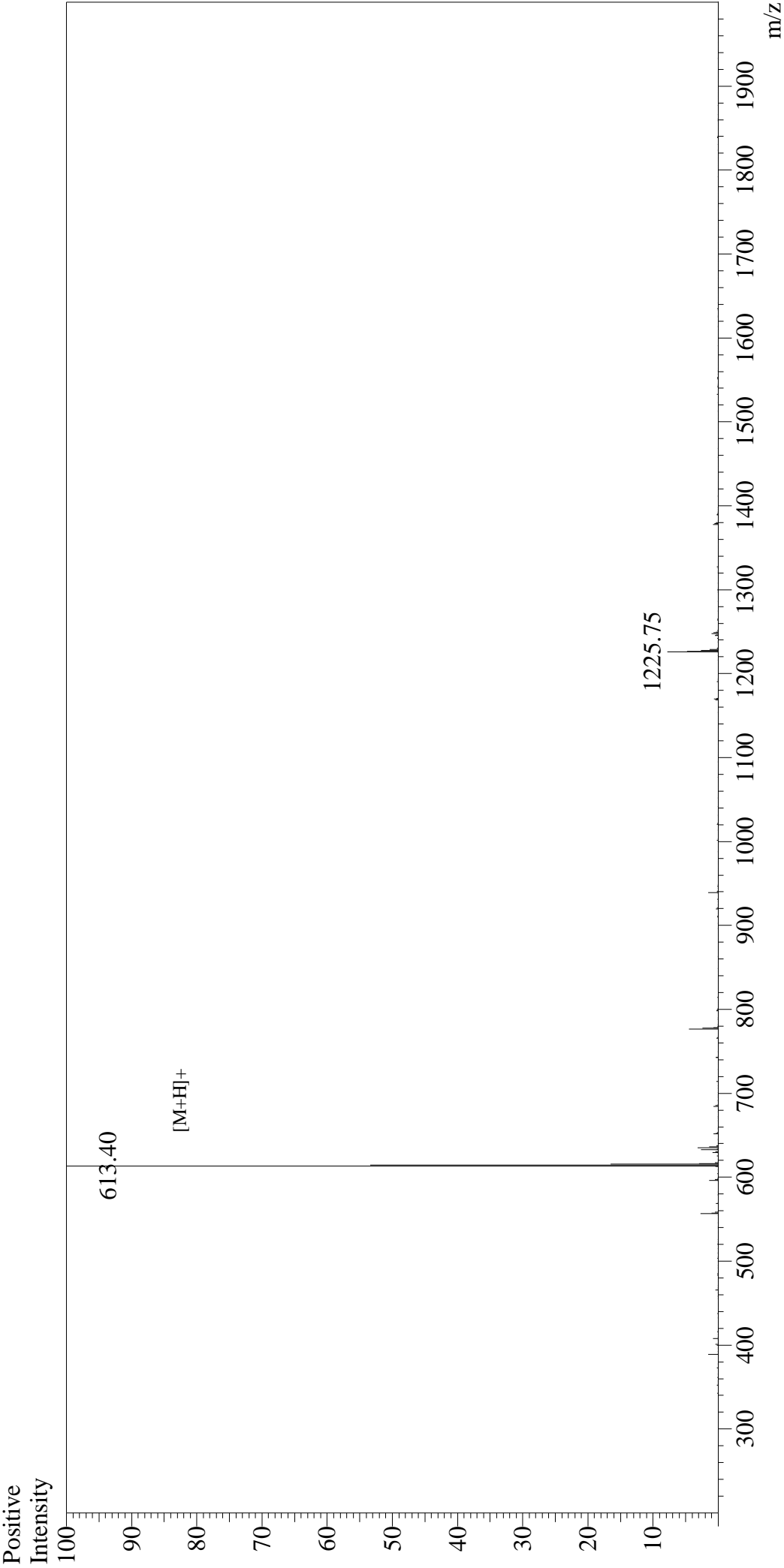


Mass Spectrum



Sample Information		Interface		Interface Bias	
User :	Gary	Interface	:ESI	Drying Gas Flow	:+4.5kV
Month-Day Processed :	06/21/18	Nebulizing Gas Flow	:1.5L/min	T.Flow	:5 L/min
Time Processed :	20:47:11	CDL Temp	:250°C	B.conc	:0.2ml/min
Injection Volume :	0.2	Block Temp	:200°C		:50%H2O/50%MeOH
Sample Name :		Substance P (7-11)			
Cat No. :	RP10182				
Lot No. :	PE9921806				
Theoretical MW :	612.80				
Observed MW :	612.40				