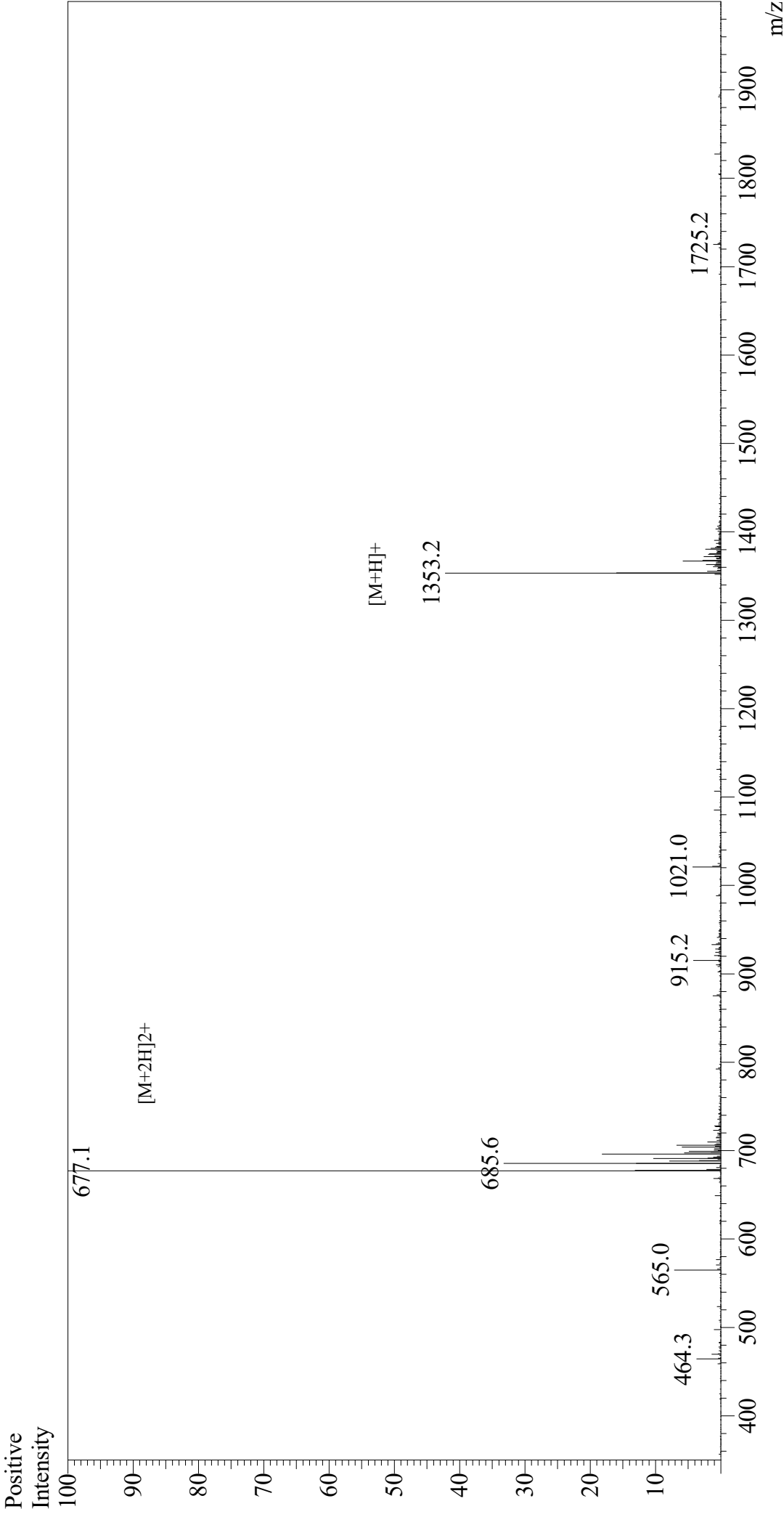


# Mass Spectrum



Sample Information  
Month-Day Processed : 06/10/21  
Time Processed : 4:46:43 PM  
Injection Volume : 0.4  
Sample Name : Glucagon (19-29), human  
Cat No: RP10770  
Lot No: E9907121F  
Theoretical MW: 1352.52  
Observed MW: 1352.2

Interface : ESI  
Nebulizing Gas Flow : 1.5L/min  
CDL Temp : 250  
Block Temp : 200

Equipment : GK11010007  
Interface Bias : +4.5 kV  
Drying Gas Flow : 5 L/min  
T.Flow : 0.2 ml/min  
B.conc : 50%H2O/50%MeOH