

Sample Name: Peptide YY (PYY) (3-36), human
 Cat No. : RP10354
 Lot No. : E6374120B
 Time Processed: 10:02:33 AM
 Month-Day-Year Processed :02/27/2020

Pump A : 0.065% trifluoroacetic in 100% water (v/v)
 Pump B : 0.05% trifluoroacetic in 100% acetonitrile (v/v)
 Total Flow: 1 ml/min
 Wavelength: 220 nm

<<LC Time Program>>

| Time | Module | Command | Value |
|-------|------------|-----------------|-------|
| 0.01 | Pumps | Solvent B Conc. | 5 |
| 25.00 | Pumps | Solvent B Conc. | 65 |
| 25.01 | Pumps | Solvent B Conc. | 95 |
| 27.00 | Pumps | Solvent B Conc. | 95 |
| 27.01 | Pumps | Solvent B Conc. | 5 |
| 33.00 | Pumps | Solvent B Conc. | 5 |
| 33.00 | Controller | Stop | |

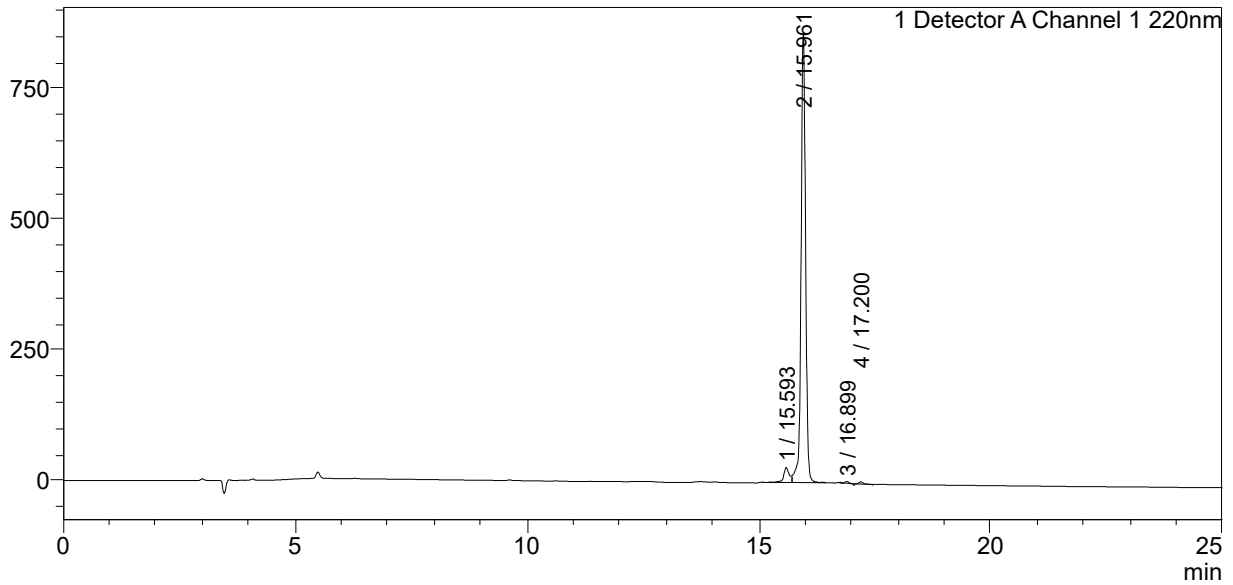
<<Column Performance>>

<Detector A>

Column : Alltima™ C18 4.6 x 250 mm
 Equipment: ZJ19010325

<Chromatogram>

mV



<Peak Table>

Detector A Channel 1 220nm

| Peak# | Ret. Time | Area | Height | Area% |
|-------|-----------|---------|--------|---------|
| 1 | 15.593 | 228989 | 28628 | 3.741 |
| 2 | 15.961 | 5854213 | 861226 | 95.652 |
| 3 | 16.899 | 15189 | 3553 | 0.248 |
| 4 | 17.200 | 21944 | 4000 | 0.359 |
| Total | | 6120336 | 897407 | 100.000 |