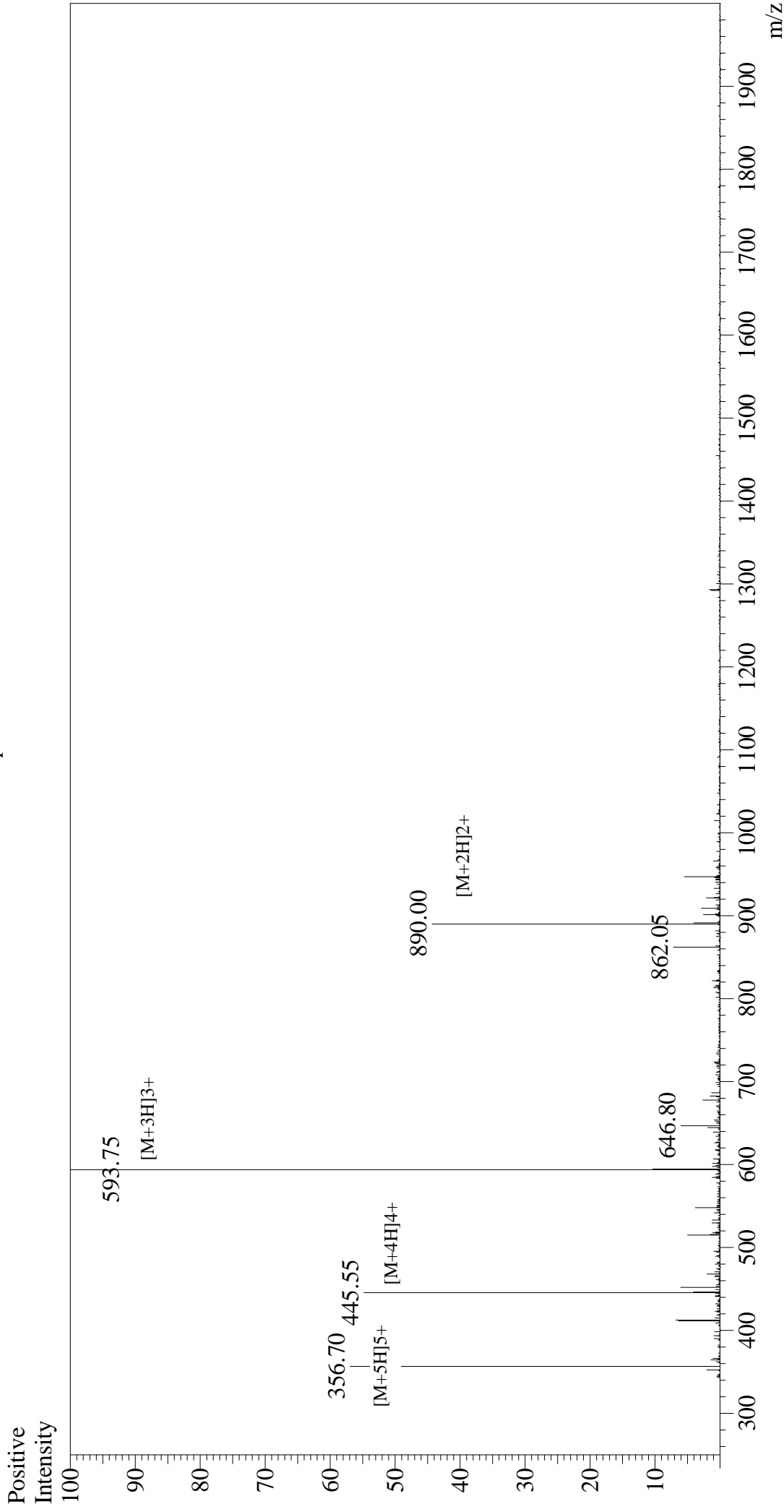


# Mass Spectrum



## Sample Information

Acquired by : Gary  
Month-Day Processed : 11/21/17  
Time Processed : 17:13:40  
Injection Volume : 0.2  
Sample Name : SAMS Peptide  
Cat. No. : RP20457  
Lot. No. : PE2421711  
Theoretical MW : 1778.20  
Observed MW : 1778.25

Interface : ESI  
Nebulizing Gas Flow : 1.5L/min  
CDL Temp : 250°C  
Block Temp : 200°C

Interface Bias  
Drying Gas Flow  
T.Flow  
B.conc

: +4.5 kV  
: 5 L/min  
: 0.2 ml/min  
: 50% H2O/50% MeOH