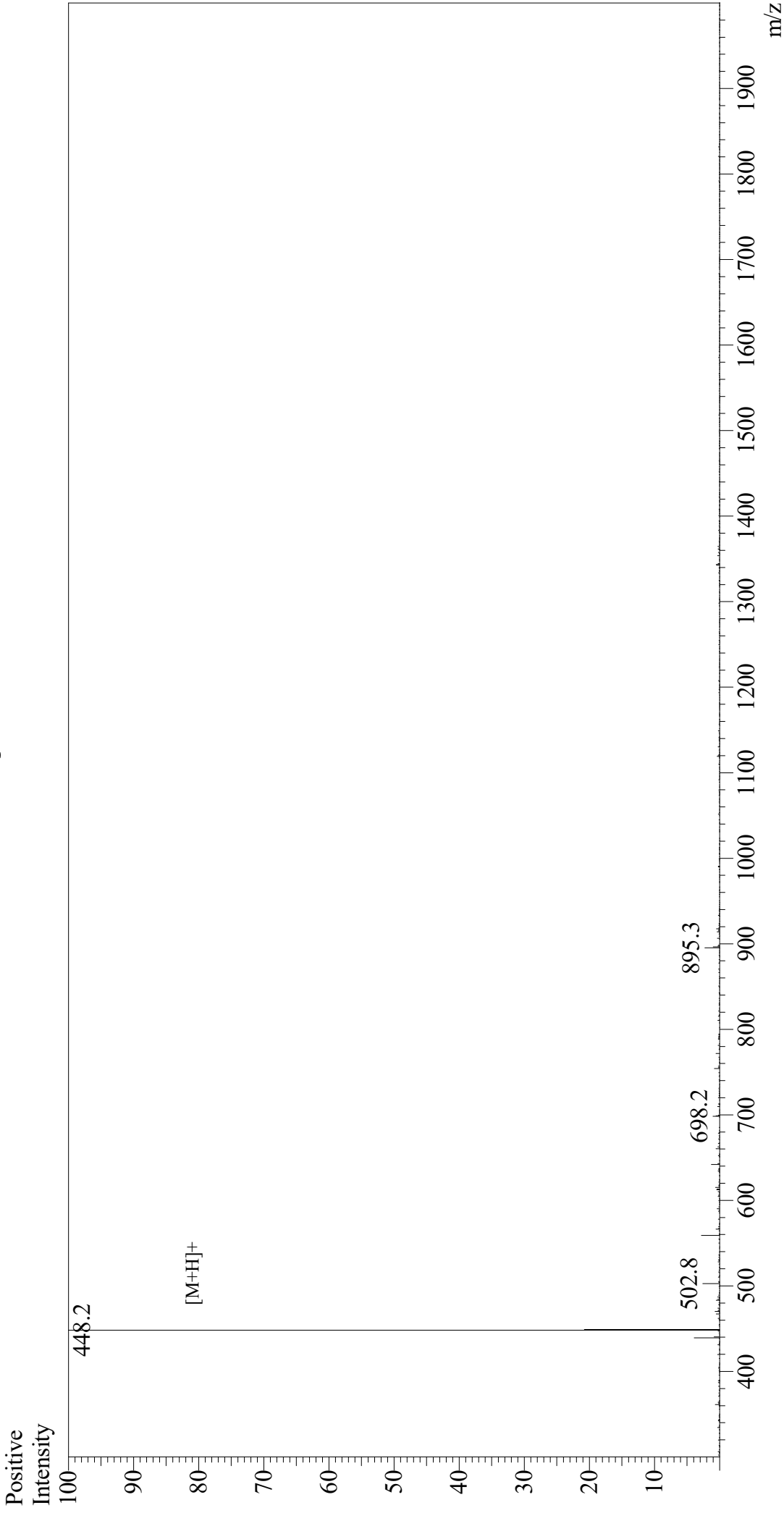


Mass Spectrum



Sample Information

Acquired by: Gary
Month-Day Processed: 09/20/19
Time Processed: 09:15:34 PM
Injection Volume: 0.3
Sample Name: Arg-Gly-Glu-Ser
Cat. No.: RP113448
Lot. No.: E4911019I
Theoretical MW: 447.45
Observed MW: 447.2

Interface: ESI
Nebulizing Gas Flow: 1.5L/min
CDL Temp: 250
Block Temp: 200

Equipment: GK11010007
Interface Bias: +4.5 kV
Drying Gas Flow: 5 L/min
T.Flow: 0.2 ml/min
B.conc: 50% H₂O/50% MeOH