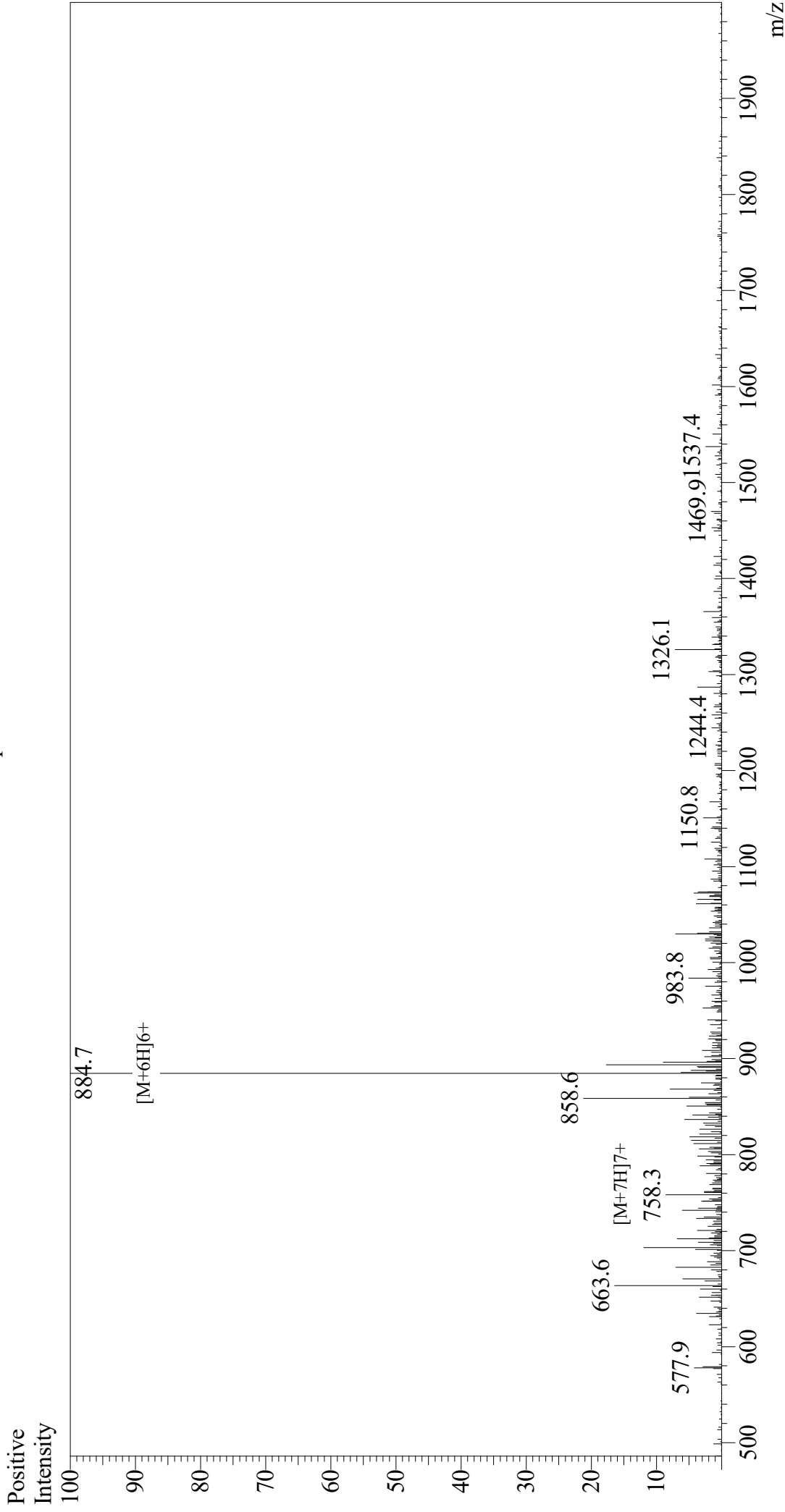


Mass Spectrum



Sample Information

Acquired by : Gary
 Month-Day Processed : 08/14/19
 Time Processed : 04:01:43 PM
 Injection Volume : 0.3
 Sample Name : Calmodulin Binding Peptide 1
 Cat. No.: RP13247
 Lot. No. : E8850719G
 Theoretical MW : 5301.01
 Observed MW : 5302.2

Interface

Interface : ESI
 Nebulizing Gas Flow : 1.5L/min
 CDL Temp : 250
 Block Temp : 200

Equipment

Equipment : GK11010007
 Interface Bias : +4.5 kV
 Drying Gas Flow : 5 L/min
 T.Flow : 0.2 ml/min
 B.conc : 50% H2O/50% MeOH