

Sample Name : Calmodulin Binding Peptide 1  
 Cat. No.: RP13247  
 Lot. No. : E8852719G  
 Time Processed : 16:46:57  
 Month-Day-Year Processed : 08/14/2019

Pump A : 0.065% trifluoroacetic in 100% water (v/v)  
 Pump B : 0.05% trifluoroacetic in 100% acetonitrile (v/v)  
 Total Flow: 1 ml/min  
 Wavelength: 220 nm

Time	Unit	Command	Value	Comment
0.01	Pumps	Pump A B.Conc	5	
25.00	Pumps	Pump A B.Conc	65	
25.01	Pumps	Pump A B.Conc	95	
31.00	Pumps	Pump A B.Conc	95	
31.01	Pumps	Pump A B.Conc	5	
40.00	Pumps	Pump A B.Conc	5	
40.00	Controller	Stop		

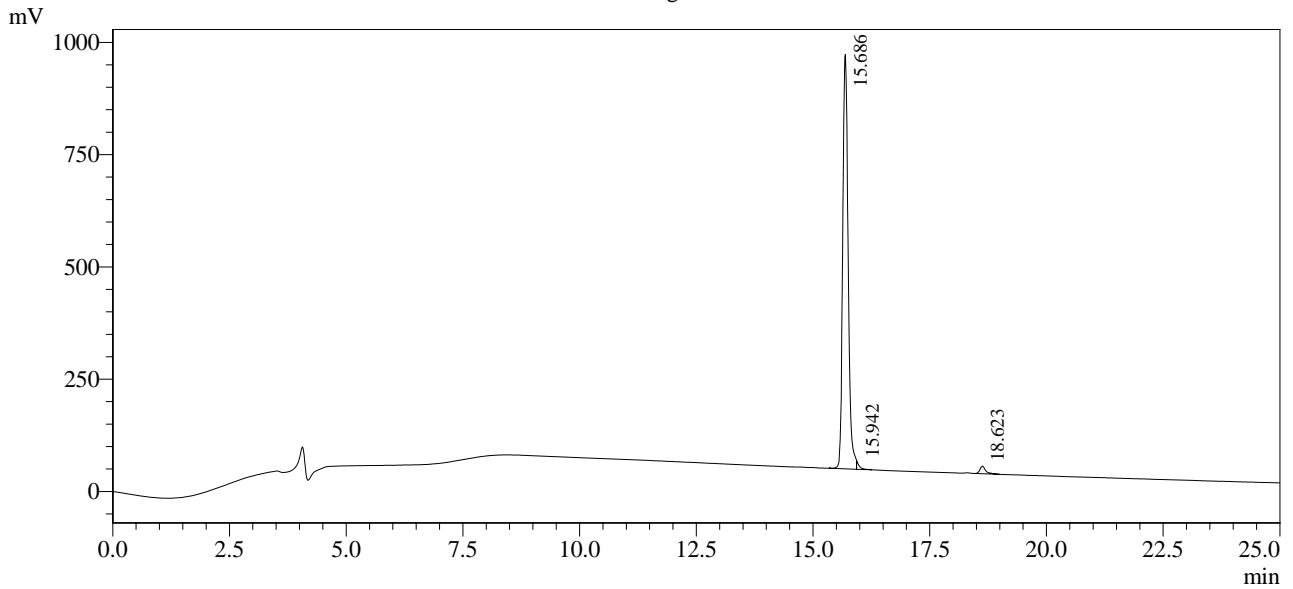
<<Column Performance>>

<Detector A>

Column : Inertsil ODS-3 4.6 x 250 mm

Equipment: SS-CM-0309

Chromatogram



1 Det.A Ch1 / 220nm

Peak Table

Detector A Ch1 220nm

Peak#	Ret. Time	Area	Height	Area %
1	15.686	7469794	923072	97.302
2	15.942	63925	17200	0.833
3	18.623	143195	16752	1.865
Total		7676914	957025	100.000