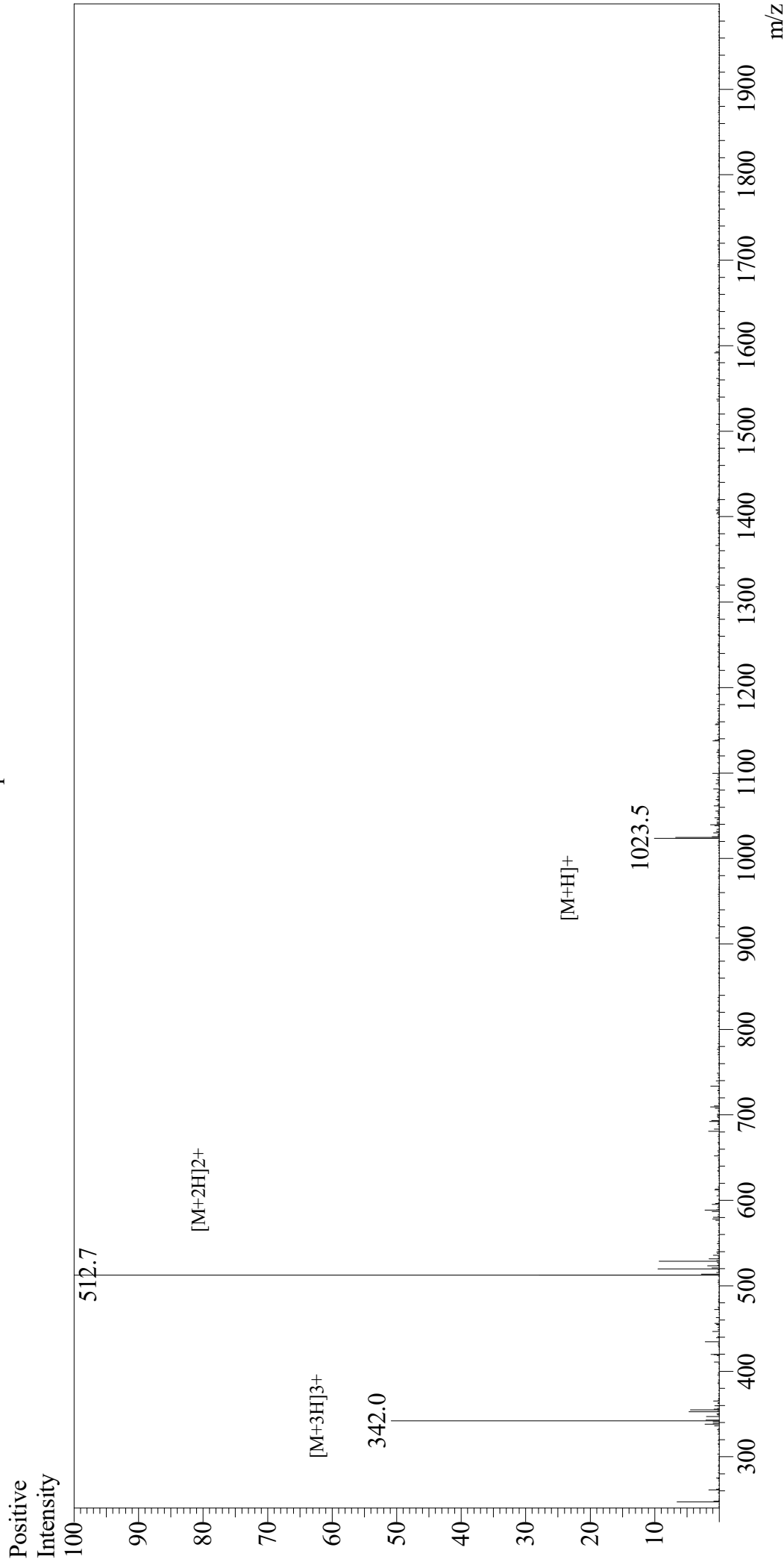


Mass Spectrum



Sample Information

User : Gary
Month-Day Processed : 06/12/20
Time Processed : 08:11:05 PM
Injection Volume : 0.3
Sample Name : Heparin Binding Peptide
Cat No. : RP13456
Lot No. : E0762320F
Theoretical MW : 1023.21
Observed MW : 1023.4

Interface : ESI
Nebulizing Gas Flow : 1.5L/min
CDL Temp : 250
Block Temp : 200

Equipment : GK11010007
Interface Bias : +4.5kV
Drying Gas Flow : 5 L/min
T.Flow : 0.2ml/min
B.conc : 50%H₂O/50%MeOH