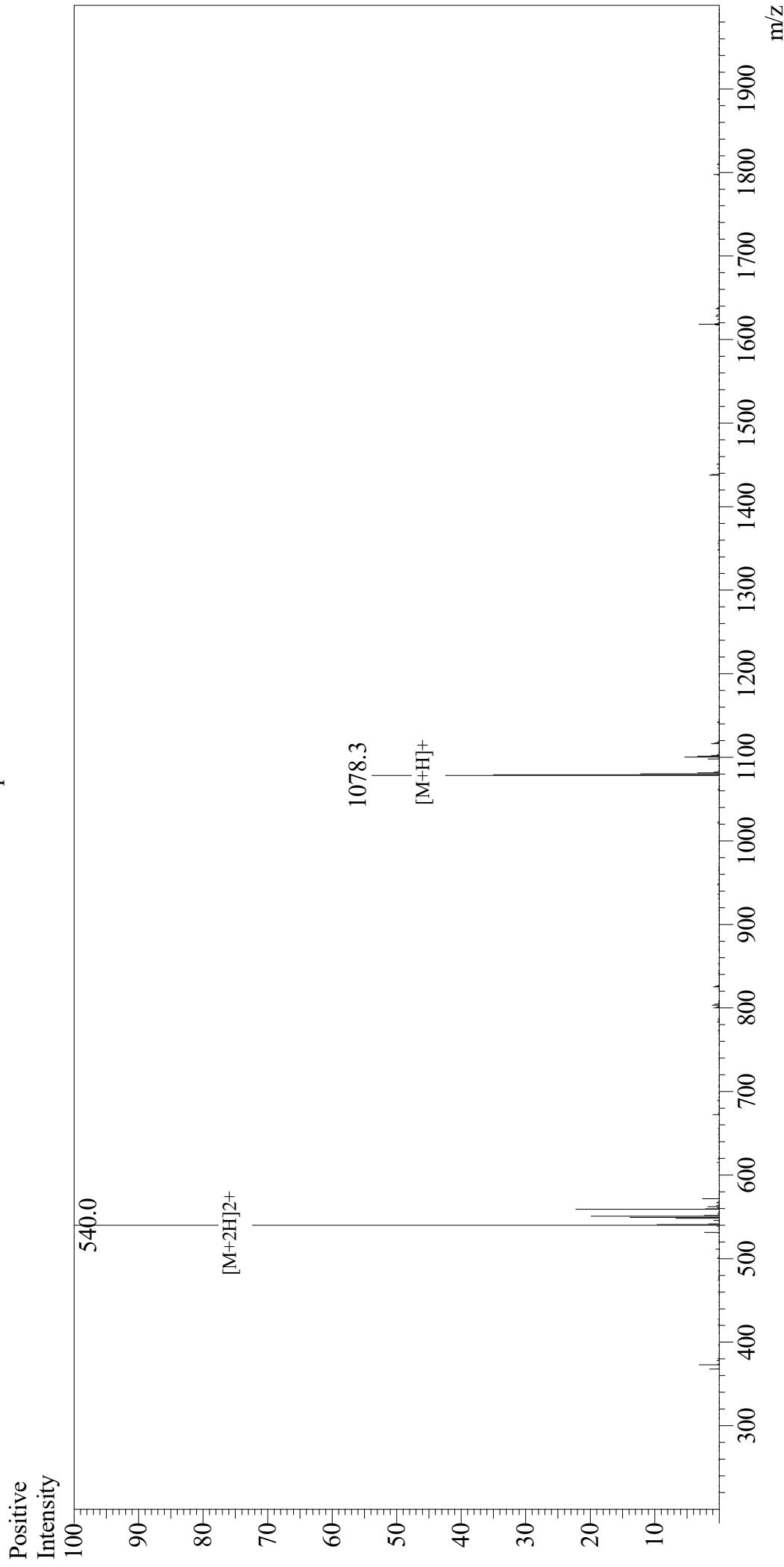


# Mass Spectrum



## Sample Information

User : Gary  
Month-Day Processed : 03/29/19  
Time Processed : 07:59:03 PM  
Injection Volume : 0.2  
Sample Name : NP (396-404)  
Cat No. : RP20090  
Lot No. : PE5791903  
Theoretical MW : 1078.18  
Observed MW : 1078.0

Interface : ESI  
Nebulizing Gas Flow : 1.5L/min  
CDL Temp : 250  
Block Temp : 200

Equipment : GK11010007  
Interface Bias : +4.5kV  
Drying Gas Flow : 5 L/min  
T.Flow : 0.2ml/min  
B.conc : 50%H<sub>2</sub>O/50%MeOH