

Sample Name : Glucagon-Like Peptide (GLP) I (7-36), amide, human
 Cat No :RP10773
 Lot No :E8072921C
 Time Processed :20:38:40
 Month-Day-Year Processed :03/11/2021

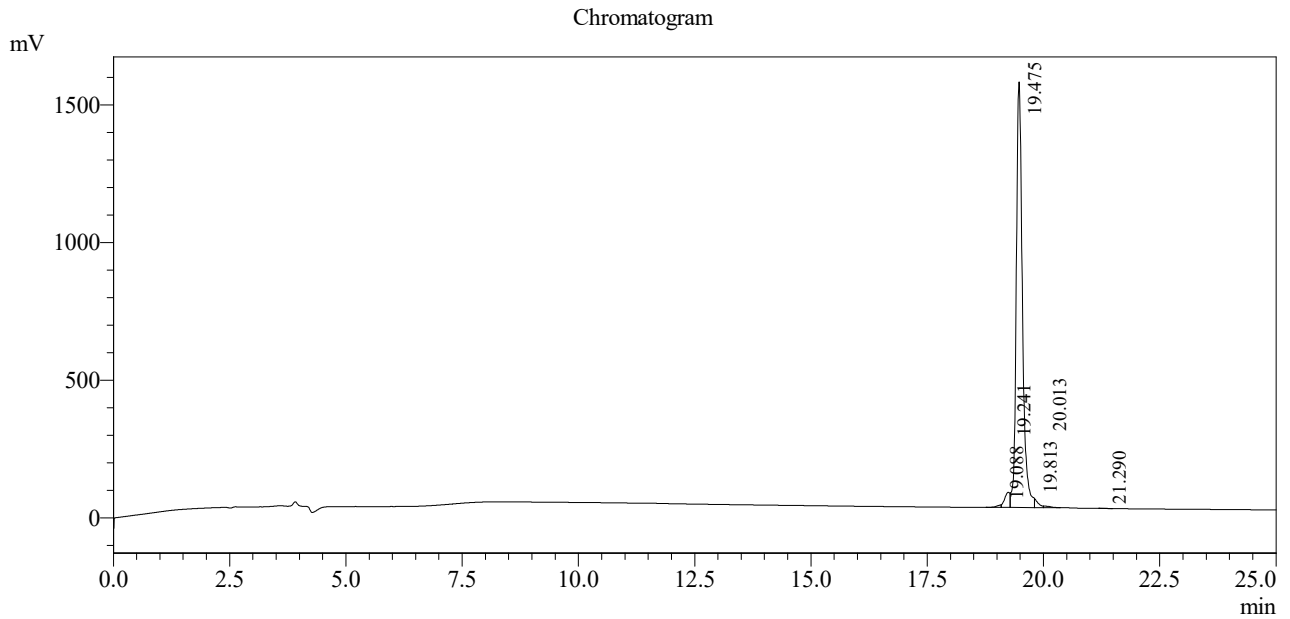
Pump A : 0.065% trifluoroacetic in 100% water (v/v)
 Pump B : 0.05% trifluoroacetic in 100% acetonitrile (v/v)
 Total Flow:1 ml/min
 Wavelength:220 nm

| Time | Module | Command | Value |
|-------|------------|---------------|-------|
| 0.01 | Pumps | Pump A B.Conc | 5 |
| 25.00 | Pumps | Pump A B.Conc | 65 |
| 25.01 | Pumps | Pump A B.Conc | 95 |
| 27.00 | Pumps | Pump A B.Conc | 95 |
| 27.01 | Pumps | Pump A B.Conc | 5 |
| 35.00 | Pumps | Pump A B.Conc | 5 |
| 35.01 | Controller | Stop | |

<<Column Performance>>

<Detector A>

Column : Inertsil ODS-3 4.6 x 250 mm



1 Detector A Channel 1 / 220nm

Peak Table

Detector A Channel 1 220nm

| Peak# | Ret. Time | Area | Height | Area % |
|-------|-----------|----------|---------|---------|
| 1 | 19.088 | 64352 | 9440 | 0.430 |
| 2 | 19.241 | 438609 | 55033 | 2.932 |
| 3 | 19.475 | 14234074 | 1545649 | 95.164 |
| 4 | 19.813 | 166110 | 32791 | 1.111 |
| 5 | 20.013 | 50612 | 5141 | 0.338 |
| 6 | 21.290 | 3696 | 588 | 0.025 |
| Total | | 14957452 | 1648642 | 100.000 |